



The Arkansas State University System 2018-2019 Factbook

Any questions concerning
material contained in this
book should be directed to:

The Office of Institutional Effectiveness
Arkansas State University
P.O. Box 790
State University, Arkansas 72467

Telephone: (870)972-3027
Fax: (870)972-3683
E-mail: asuirp@AState.edu

2018-2019 A-State System Factbook cover designed by the
staff of the Office of Publications & Creative Services.

Factbooks produced by
The Office of Institutional Effectiveness
are available in electronic format on our web site at
<http://www.AState.edu/irp>.



Table of Contents

Forward	4
A Quick Reference (Arkansas State University System)	5

ORGANIZATION

Arkansas State University System	9
Arkansas State University	10
Arkansas State University-Beebe	11
Arkansas State University-Mountain Home	12
Arkansas State University-Newport	13
Arkansas State University Mid-South	14
Organizational Structure, ASU System	15
Organizational Structure, A-State	16
Academic Affairs & Research, A-State	17
Enrollment Management, A-State	19
Finance & Administration, A-State	20
Student Affairs, A-State	21
University Advancement, A-State	22
Institutional Classifications (SREB & Carnegie Foundation)	23

ACADEMIC PROGRAMS

Undergraduate Academic Programs (A-State)	27
Graduate Academic Programs (A-State)	28
Academic Programs (Other ASU System Campuses)	29
Degrees & Certificates Awarded Summary	30
Degrees Awarded by College & Department (A-State)	31
Degrees Awarded by Undergraduate Program (A-State)	32
Degrees Awarded by Graduate Program (A-State)	33

STUDENTS

System Enrollment Summary	37
Total Enrollment	
A-State	38
ASU-Beebe	39
ASU-Mountain Home	40
ASU-Newport	41
ASU Mid-South	42
Geographic Origin of Total Enrollment (A-State)	43
Geographic Origin of International Students (A-State)	44
Enrollment & SCH by Legal Residence (A-State)	45
Enrollment by College & Department (A-State)	46

Undergraduate Enrollment by Degree Program (A-State)	47
Graduate Enrollment by Degree Program (A-State)	48
Enrollment by College & Career (A-State)	49
SCH Production by College & Career (A-State)	50
Full-Time Equivalent Enrollment (A-State)	51
SCH Production (A-State)	52
New Student Applications (A-State)	53
First-Time Freshmen (A-State)	54
Academic Preparation - Admission Test Scores (A-State)	55
Academic Preparation - Remediation (A-State)	56
Academic Progress - Retention Rates (A-State)	57
Academic Progress - Graduation Rates (A-State)	58
Undergraduates (A-State)	59
Undergraduate Transfer Students (A-State)	60
Graduates (A-State)	61
Alumni Statistics (A-State)	62
Athletic Administration (A-State)	63
Dean B. Ellis Library (A-State)	64
Student Costs - Tuition & Required Fees	65
Student Costs - Residence Life (A-State)	66
Financial Aid (A-State)	67
Arkansas State University Donors (A-State)	68

EMPLOYEES

System Employee Summary	71
Full-Time Instructional Faculty (A-State)	72
Full-Time Instructional Faculty Statistics (A-State)	73
Full-Time Instructional Faculty Salaries (A-State)	74
Full-Time Staff Statistics (A-State)	75

Forward

Welcome to the **2018-2019 Arkansas State University System Factbook!** The ASU System Factbook is a publication produced by the Office of Institutional Effectiveness that outlines enrollment, faculty and staff data, and other comprehensive information for the Arkansas State University campuses at Jonesboro, Beebe, Mountain Home, Newport and West Memphis. The ASU System Factbook is produced annually and is intended to provide answers to questions that are frequently asked by the administration, faculty, staff, students, alumni and other university constituents.

The definitions and guidelines used to compile this information are provided by the Integrated Postsecondary Education Data System (IPEDS), the Arkansas Department of Higher Education (ADHE), the Office for Civil Rights (OCR) and the National Collegiate Athletic Association (NCAA). It is important to note that the information in this factbook may differ from data reported by the Office of Institutional Effectiveness to federal, state and regional agencies due to differences in reporting guidelines, reporting definitions, and the timing of when the information was prepared.

In order to make information more readily available to all constituents, the ASU System Factbook is available in PDF format on the Institutional Effectiveness web site. You can reach our web site through the Arkansas State University Home Page, or you can go to our site directly at

<http://www.AState.edu/irp>

A comprehensive document of this magnitude requires the assistance of a number of people on the various ASU campuses. Many thanks to all who helped make the **2018-2019 Arkansas State University System Factbook** a successful reality. A special thanks goes out to the Office of Publications and Creative Services' staff for their contribution in the 2018-2019 ASU System Factbook cover and tab inserts. Should you have any questions, comments or corrections regarding this document, please contact the Office of Institutional Effectiveness. (P.O. Box 790, State University, Arkansas, 72467; Phone: (870)972-3027; Fax: (870)972-3683; E-mail: asuirp@Astate.edu)

A Quick Reference

Arkansas State University System

Number of Students Fall 2018

Enrollment, All Locations	22,547
<i>*Headcount, All Locations includes 349 students enrolled at Campus Queretaro. Per IPEDS methodology, only United States based students are included in data breakdowns in this Factbook for Institutional Effectiveness data.</i>	
Arkansas State University System (excludes Queretaro)	
Enrollment	22,198
Full-Time-Equivalent (FTE).....	15,055
Undergraduate	
Jonesboro (68.2%)	9,350
Beebe*	3,446
Mountain Home	1,345
Newport*	2,275
Mid-South	1,423
Graduate	
Jonesboro (31.8%)	4,359
Male	
Jonesboro (37.7%)	5,175
Beebe (40.0%)	1,377
Mountain Home (40.3%)	542
Newport (39.7%)	904
Mid-South (37.1%)	528
Female	
Jonesboro (62.3%)	8,534
Beebe (60.0%)	2,069
Mountain Home (59.7%)	803
Newport (60.3%)	1,371
Mid-South (62.9%)	895
Ethnic Minorities (non-Caucasian, excludes Unknown & International)	
Jonesboro (19.0%)	2,611
Beebe (17.1%)	588
Mountain Home (7.6%)	102
Newport (24.3%)	553
Mid-South (63.9%)	910
Age	
	Under 25 25 & Older
Jonesboro.....	8,405 5,304
Beebe	2,697 749
Mountain Home	898 447
Newport.....	1,656 619
Mid-South	1,107 316

Enrollment from Arkansas

Jonesboro (70.9%)	9,714
Beebe (98.0%)	3,376
Mountain Home (95.7%)	1,287
Newport (93.4%)	2,125
Mid-South (93.2%)	1,326

Enrollment from Out-of-State

Jonesboro (24.5%)	3,365
Beebe (1.4%)	49
Mountain Home (4.3%)	58
Newport (6.0%)	137
Mid-South (6.8%)	97

Enrollment from Foreign Countries

Jonesboro (4.6%)	630
Beebe (0.6%)	21
Mountain Home (0.0%)	0
Newport (0.6%)	13
Mid-South (0.0%)	0

Academic Awards & Degrees Fiscal Year 2017-2018

Certificate

Jonesboro.....	6
Beebe	871
Mountain Home	372
Newport	824
Mid-South	319

Associate

Jonesboro.....	586
Beebe	582
Mountain Home	227
Newport	238
Mid-South	139

Bachelor's

Jonesboro.....	1,837
----------------	-------

Graduate

Jonesboro (includes Graduate Certificates)	2,317
--	-------

Tuition & Required Fees Fall 2018

Based on 15 Hour Load for Undergraduate Students and 9 Hour Load for Graduate Students for the Fall 2018 Semester

Undergraduate Resident

Jonesboro	\$4,304
Beebe	1,800
Mountain Home	1,785
Newport	1,740
Mid-South	2,070

Undergraduate Nonresident

Jonesboro	\$7,649
Beebe	2,880
Mountain Home	2,790
Newport	2,655
Mid-South	2,670

Graduate

Resident	\$3,105
Nonresident	5,508

Full-Time Employees Fall 2018

Campuses	Faculty	Staff
Jonesboro**	525	1,054
Beebe	109	168
Mountain Home	44	67
Newport	70	92
Mid-South	44	100

Facilities Fiscal Year 2017-2018

Campuses	# Acres	# Buildings
Jonesboro	987	178
Beebe	706	69
Mountain Home	130	7
Newport	214	25
Mid-South	92	14

*NOTE: Beebe's enrollment includes Heber Springs and Searcy. Newport's data includes the Commercial Driving Technical Certificate Program, the ASU Technical Center at Marked Tree and the Jonesboro Technical Center.
 **NOTE: Jonesboro's faculty includes instructional and research faculty.
 Information Source: The Office of Institutional Effectiveness: web address: www.AState.edu/irp; email address: asuipr@AState.edu



Organization

Arkansas State University System

BOARD OF TRUSTEES

The Trustees of Arkansas State University serve as a board of management and control of Arkansas State University campuses in Jonesboro, Beebe, Mountain Home, Newport, Mid-South and Heber Springs.

In this capacity, the Trustees hire the Arkansas State University president to serve as the Chief Executive Officer, approve the curriculum of the institution, annually approve an operating budget, establish policies for the efficient operation of the institution, and approve those matters which require participation of the governing board of the University. Trustees' duties include: appointing, supporting, and assessing the performance of the president; maintaining the clarity of the mission of Arkansas State University; approving long-range plans; approving the educational program; ensuring the well-being of the students, faculty and staff; ensuring strong financial management; approving significant faculty and staff appointments and dismissals; ensuring adequate resources for quality programs; preserving institutional autonomy; interpreting the campus to the community; and interpreting the needs of society to the campus.

The governor of Arkansas appoints members of the Board of Trustees for a period of five years. The Senate of the General Assembly must confirm each appointment.

BOARD OF TRUSTEES W/TERM ENDING

Dr. Tim Langford, Chair; Little Rock - 2019
 Mr. Niel Crowson, Vice Chair; Jonesboro - 2020
 Ms. Stacy Crawford, Secretary; Jonesboro - 2021
 Mr. Price Gardner, Little Rock - 2022
 Ms. Christy Clark, Little Rock - 2023

UNIVERSITY SYSTEM LOGO



PRESIDENT OF ARKANSAS STATE UNIVERSITY SYSTEM

Dr. Charles L. Welch

CHANCELLOR OF A-STATE

Dr. Kelly Damphousse

CHANCELLOR OF ASU-BEEBE

Dr. Jennifer Methvin

CHANCELLOR OF ASU-MOUNTAIN HOME

Dr. Robin Myers

CHANCELLOR OF ASU-NEWPORT

Dr. Sandra Massey

CHANCELLOR OF ASU MID-SOUTH

Dr. Debra West

VISION AND MISSION STATEMENTS

Vision: The Arkansas State University System will create better educated citizens prepared for a global and technological society by providing quality undergraduate and graduate education, useful research and dedicated public service.

Mission: *The mission of the Arkansas State University System is to contribute to the educational, cultural, and economic advancement of Arkansas by providing quality general undergraduate education and specialized programs leading to certificate, associate, baccalaureate, masters, professional and doctoral degrees; by encouraging the pursuit of research, scholarly inquiry and creative activity; and by bringing these intellectual resources together to develop the economy of the state and the education of its citizens throughout their lives.*

Each component of the Arkansas State University System will be characterized by:

- A supportive learning environment; personal development, leadership and service opportunities; and facilities, technologies and support necessary to meet the needs of students, faculty and staff;

- Racial, ethnic, gender and cultural diversity in the faculty, staff and student body, supported by practices and programs that embody the ideals of an open, democratic, and global society;

- Instructional technologies, student support services, and on-line and distance education to advance the purposes of teaching and learning;

- A commitment to sharing human, physical, information and other resources among system components, and with state agencies, schools and higher education institutions, to expand and enhance programs and services available to the citizens of Arkansas.

Arkansas State University

Dr. Kelly Damphousse, Chancellor since 2017

Arkansas State University Mission Statement:
Arkansas State University educates leaders, enhances intellectual growth and enriches lives.

Arkansas State University's main campus in Jonesboro is located in Northeast Arkansas. Jonesboro is the fifth largest populace city in the state and has a trade, cultural and medical center for a market area of more than a half million people.

HISTORY

Arkansas State University (A-State) was established in 1909 as a state agriculture school. The institution opened as a vocational high school in 1910 and changed to State Agricultural and Mechanical College in 1925. Authority to extend the curriculum, offer senior college work and grant degrees was given to the institution by the legislature in 1925. Senior college work was initiated in 1930, and the first bachelor's degrees were granted in 1931. In 1933, the legislature changed the name of the college to Arkansas State College. Master's degree graduate programs were initiated in 1955 and Doctorate degree programs were added in 1999. Arkansas State College was granted university status in January 1967.

Since 1909, the institution that evolved into A-State has been served by thirteen presidents/chancellors.

Previous presidents/chancellors and their terms of service were:

- ◆ Mr. V.C. Kays, 1909-43; ◆ Dr. Horace Thompson, 1943-45;
- ◆ Dr. William J. Edens, 1946-51; ◆ Dr. Carl R. Reng, 1951-75;
- ◆ Dr. Ross Pritchard, 1975-78; ◆ Mr. Carl Whillock, 1978-80;
- ◆ Mr. Ray Thornton, 1980-84; ◆ Dr. Eugene Smith, 1984-92;
- ◆ Dr. John N. Mangieri, 1992-94; ◆ Dr. Leslie Wyatt, 1995-2006;
- ◆ Dr. Robert L. Potts, 2006-2010; ◆ Dr. Tim Hudson, 2012-2016

PROVOST

VICE CHANCELLOR OF A-STATE

Dr. Lynita Cooksey – Academic Affairs & Research

VICE CHANCELLORS OF A-STATE

Dr. Brian Terry – Enrollment Management
 Dr. Len T. Frey – Finance & Administration
 Dr. Jason Penry – University Advancement

OFFICE OF RECRUITMENT

P.O. Box 1800
 State University, AR 72467

ADMISSIONS, RECORDS & REGISTRATION

P.O. Box 1570
 State University, AR 72467

OFFICE OF INTERNATIONAL PROGRAMS

P.O. Box 2230
 State University, AR 72467

WEB SITE

AState.edu

PROGRAMS OF STUDY

Arkansas State University offers programs at the doctoral, specialist, master's, bachelor's and associate degree levels through the colleges of Agriculture, Business, Education & Behavioral Science, Engineering & Computer Science, Liberal Arts & Communication, Nursing & Health Professions, Sciences & Mathematics and Undergraduate Studies. Additionally, A-State offers degree programs at Beebe, Mountain Home, West Memphis and online.

ACCREDITATION

In order to maintain the highest quality in all its programs, A-State actively seeks evaluation from accreditation visits and program reviews to monitor academic quality. Academic programs are accredited by the regional accrediting agency for all programs. Individual programs are accredited by specialized accrediting agencies for the respective programs.

Accrediting Organizations: Higher Learning Commission of the North Central Association; AACSB International; Accreditation Commission for Education in Nursing; American Chemical Society; Accrediting Council on Education in Journalism and Mass Communications; Commission on Accreditation of Allied Health Education Programs; Commission on Accreditation in Physical Therapy Education; Commission on Accreditation of Athletic Training Education; Council for the Accreditation of Counseling and Related Education Programs; Council for the Accreditation of Educator Preparation; Council on Academic Accreditation in Audiology and Speech-Language Pathology; Council on Accreditation of Nurse Anesthesia; Council on Rehabilitation Education; Council on Social Work Education; Engineering Accreditation Commission of the Accreditation Board for Engineering and Technology, Inc.; Joint Review Committee on Education in Diagnostic Medical Sonography; Joint Review Committee on Education in Nuclear Medicine Technology; Joint Review Committee on Education in Radiologic Technology; National Accrediting Agency for Clinical Laboratory Sciences; National Alliance of Concurrent Enrollment; National Association of Schools of Art and Design; National Association of Schools of Music; National Association of Schools of Public Affairs and Administration; National Association of School Psychologists; National Association of Schools of Theatre; National Council for Accreditation of Teacher Education; National League for Nursing Accrediting Commission; Network of International Business Schools

Arkansas State University-Beebe

Dr. Jennifer Methvin, Chancellor since 2018

Arkansas State University-Beebe Mission Statement:
Transforming lives through quality learning experiences.

HISTORY

As the oldest two-year college in the state, ASU-Beebe has paved the way in making a quality education affordable and attainable for Central Arkansas students. In 1927, ASU-Beebe was founded as Junior Agricultural School of Central Arkansas after Beebe citizens donated 300 acres of land to start the school. In 1931, the name was changed to Junior Agricultural College of Central Arkansas, and a college curriculum was established. The college has been affiliated with the Arkansas State University System since 1955.

ASU-Beebe has established a strong reputation of providing quality, affordable instruction and service programs to its surrounding communities. Located 31 miles north of Little Rock, it is the tenth largest college in the state and has an enrollment greater than four of Arkansas' public four-year colleges. It is the only Arkansas two-year college with residence halls, and has recently built new suite-style residence halls to better serve student needs.

ASU-Beebe has a tremendous positive impact on the economy of Central Arkansas, contributing over \$316 million annually to the regional economy through its operations, capital spending and workforce comprised of former students. ASU-Beebe has maintained its commitment to the development of top-notch learning facilities throughout the years by expanding and renovating facilities on each of the campuses.

CORE VALUES

While strengthening our practice of being student-centered, we will guide our internal conduct as well as our relationships with those we serve by applying the values of integrity, diversity and global awareness, excellence, access and student-centered (IDEAS).

INTEGRITY

We value integrity by having honesty and truthfulness in the consistency of our actions, methods and principles.

DIVERSITY AND GLOBAL AWARENESS

We value diversity and global awareness by assisting our students and employees to increase their exposure to and understanding of our diverse local, state and global societies and their impact on cultural and economic well-being.

EXCELLENCE

We value continuous improvement and strive for excellence by accomplishing our tasks with distinction.

ACCESS

We value access to educational opportunities by providing multiple locations, diverse programs and delivery methods.

STUDENT-CENTERED

We value a student centered culture by focusing on the needs, abilities, interests and education of our students as our highest priority.

PROGRAMS OF STUDY

ASU-Beebe has established itself as a center of academic excellence, continually having one of the highest retention and graduation rates among Arkansas two-year colleges. In fact, the Aspen Institute ranked ASU-Beebe in the top 10% twice. It offers high-quality Associate of Arts in Liberal Arts degrees with the option of choosing coursework from the fine arts, the sciences, the social sciences, education, health sciences, mathematics, foreign languages, English and history. In addition, ASU-Beebe has the only Associate of Fine Arts in Music program available at any two-year college in the state. ASU-Beebe offers small class sizes, great access to faculty and full-time tutoring for students. It also strives to promote campus safety and has been ranked as the safest college campus in the nation by StateUniversity.com.

ASU-Beebe is a leader in the state for vocational and technical education. In addition to Associate of Applied Science, Associate of Arts, Associate of Arts in Teaching, Associate of Fine Arts, Associate of General Studies and Associate of Science in Health Sciences degrees, Computer Information Systems, Agriculture, Business or Criminal Justice. ASU-Beebe offers certificates of proficiency and one-year technical certificates that are designed to prepare students to meet the needs of today's rapidly evolving industries. Through its advanced technology division, programs are available with emphasis on the fast-changing needs of a modern industrial society. Advanced technology programs offered include computer systems and networking technology, computer-aided drafting/design, industrial technology, general technology, John Deere agriculture equipment technology, electronics technology and medical laboratory technology. In 2007, ASU-Beebe founded the state's only veterinary technician training program, providing the opportunity for students to obtain an Associate of Applied Science in Veterinary Technology degree. In addition to its credit students, ASU-Beebe serves approximately 3,600 continuing education or workforce development students each year.

ARKANSAS STATE UNIVERSITY-BEEBE

P.O. Box 1000
Beebe, AR 72012-1000
(501)882-3600
www.asub.edu

ACCREDITATION

ASU-Beebe is accredited by the Higher Learning Commission of the North Central Association of Colleges and Schools and by the National Accrediting Agency for Clinical Laboratory Sciences. In addition, among other accreditations, the Veterinary Technology and concurrent enrollment programs are accredited, and ASU-Beebe has the only nationally-accredited Pharmacy Technician program in the state. ASU-Beebe is certified by the Arkansas State Board of Nursing, the Arkansas Office of Emergency Medical Services and the National Automotive Technicians Education Foundation.

Arkansas State University-Mountain Home

Dr. Robin Myers, Chancellor since 2012

Arkansas State University-Mountain Home Mission Statement:
The mission of ASUMH is to LEAD through educational opportunities.
Lifelong Learning,
Enhanced Quality of Life,
Academic Accessibility, and
Diverse Experiences

HISTORY

In 1991, the Arkansas General Assembly created technical colleges from the Baxter County Vocational-Technical Center and the North Arkansas Community/Technical College Center in Mountain Home. Mountain Home Technical College was established on July 1, 1991. In 1992, the Mountain Home Technical College agreed to seek affiliation with Arkansas State University to form a sister campus. On July 1, 1993, Mountain Home Technical College became Arkansas State University Mountain Home Technical College.

Arkansas State University-Mountain Home (ASUMH) was established on July 1, 1995 due to the commitment of the residents of Baxter County and the cooperation of the Department of Higher Education and Arkansas State University in Jonesboro.

ASUMH has an open door admissions policy. This policy is designed to enhance access to educational opportunities. Standards of quality are maintained and students are required to remove deficiencies before entering certain programs or courses.

Nestled in the beautiful Ozark Mountains, 156 miles north of Little Rock, the environment at ASUMH encourages free expression, leadership and innovation. Small class size means personal attention and support from instructors. Additionally, the construction of a new campus accommodating 1,200 students offers an even more appealing setting for students to pursue higher education.

PROGRAMS OF STUDY

An Associate of Arts is offered for those students needing maximum flexibility in the selection of a course of study to meet individual employment and educational needs. It can be designed to meet the General Education requirements for those individuals planning to transfer to a four-year institution in order to complete a bachelor's degree. Associates of Applied Science are offered in Crime Scene Investigation, Criminal Justice, Funeral Science, Information Systems Technology, Law Enforcement Administration, Management, Nursing, Paramedic Technology, Respiratory Care and Welding Technology. Also offered is an Associate of Arts in Teaching, Associate of General Studies and an Associate of Science in Business, Criminal Justice and Early Childhood Education. Technical Certificates are offered in Crime Scene Investigation, Electronics Technology, Funeral Directing, General Business, Health Professions, Information Systems Technology, Law Enforcement Administration, Paramedic Technology, Practical Nursing and Welding Technology.

A-State and ASUMH have formed a partnership to offer various bachelor's and graduate degree programs through the Center for Advanced Studies on the Mountain Home campus. The bachelor's degrees are offered by building on the existing Associate of Arts degree offered at ASUMH. The Center currently offers bachelor's degrees in Agricultural Business, Business Administration, Clinical Lab Science, Criminology, Early Childhood Education, Management, Middle-Level Education, Nursing and Technology. Master's degrees are offered in Business Administration, Curriculum and Instruction, and Educational Leadership.

ACCREDITATION

ASUMH is accredited by the Higher Learning Commission of the North Central Association (Thirty North LaSalle, Suite 2400, Chicago, IL 60602), the American Board of Funeral Service Education, and the Arkansas State Board of Nursing.

ARKANSAS STATE UNIVERSITY-MOUNTAIN HOME

1600 S. College Street
 Mountain Home, AR 72653
 (870)508-6100
www.asumh.edu

ASU-Mountain Home Campus



Arkansas State University-Newport

Dr. Sandra Massey, Chancellor since 2013

Arkansas State University-Newport Mission Statement:

*To Provide Integrity of Programs and Services;
Affordable Life Long Learning;
and Enhanced Quality of Life
In the Diverse Community We Serve*

HISTORY

Arkansas State University-Newport (ASUN) has been in continuous operation since August 1975. Prior to being named ASU-Newport, the campus was known as White River Vocational Technical School. In 1991, the Arkansas Legislature passed Act 1244 which merged White River Vocational Technical School with ASU-Beebe. In 1992, it became ASU-Beebe/Newport and in 1997 became ASU-Newport. The 83rd General Assembly of the Arkansas Legislature passed Act 297 into law on February 19, 2001, creating a separate budget appropriation for ASUN effective July 1, 2001. The Higher Learning Commission of the North Central Accreditation Association of Colleges and Schools (NCA) granted the college initial accreditation for stand-alone status for five years in August 2002. In April 2007, the college received ten year accreditation status from the NCA. In March 2001, the state legislature approved the merger of Delta Technical Institute with Arkansas State University to produce the ASU Technical Center (ASUTC). In 2008, ASUTC was aligned with ASUN.

PROGRAMS OF STUDY

Programs and services are designed to assist students (both traditional and nontraditional) in determining and achieving their educational, personal and career goals.

These programs and services include associate degrees, certificates, continuing education, workforce development, adult education, ESL and opportunities through the Career Pathways program.

The college offers transfer degree programs, including an online degree (AA in Liberal Arts), an AA degree in Teaching (including Middle School and P-4 grade options) and Computer Information Systems, applied science degrees (including RN and General Technology with an emphasis in such areas as High Voltage Lineman Technology), technical certificates in such areas as Practical Nursing, Business Technology, High Voltage Lineman Technology, and Diesel Mechanics and certificates of proficiency in such diverse areas as CNA and Truck Driver Training (the largest commercial driver training program in the state).

Partnering with business and industry and working to meet the local, county and regional needs of its students and employers, ASU-Newport is truly a "Great Place to Start."

ARKANSAS STATE UNIVERSITY-NEWPORT

7648 Victory Blvd.
Newport, AR 72112
(870)512-7800
www.asun.edu

ACCREDITATION

ASUN is accredited by the Higher Learning Commission of the North Central Association of Colleges and Schools (Thirty North LaSalle, Suite 2400, Chicago, IL 60602) and the Arkansas State Board of Nursing, the National Automotive Technicians Education Foundation, The Arkansas State Board of Cosmetology, the Arkansas Department of Health Section of EMS and Trauma Systems, and the Committee on Accreditation of Educational Programs for the Emergency Medical Services Professions.

ASU-Newport's
Student/Community Center



Arkansas State University Mid-South

Dr. Debra West, Chancellor since 2015

Arkansas State University Mid-South Mission Statement:

ASU Mid-South is a public two-year institution of higher education with an open-door admission policy, serving Crittenden County, Arkansas, and the surrounding areas with a comprehensive educational program. The College is committed to economic development in the Arkansas Delta through the provision of high quality, affordable, and convenient learning opportunities and services consistent with identified student, community, and regional needs.

To meet these needs, the College provides quality academic and support programs, personnel, technology, administrative services, and facilities necessary to respond in a timely and effective manner.

HISTORY

The evolution of ASU Mid-South began in 1991 following the Arkansas Legislature's approval of Act 1244. The legislation provided for the conversion of fourteen of Arkansas' vocational-technical schools into technical colleges, branches of four-year institutions, or community colleges with the additional support of a local millage. Ten "vo-techs," including Mid-South, accepted the conversion challenge.

The decision could easily be described as a "leap of faith," considering the early history of the institution. In operation since 1979, the school experienced little growth or support during its first 12 years of existence. At the time of its conversion to a technical college, Mid-South served fewer than 100 students annually and offered primarily adult education classes, truck driver training, practical nursing, and data processing/clerical support courses.

Section 22 of Act 1244 allowed newly-formed technical colleges to convert to community colleges with the passage of a local millage and approval of the State Board of Higher Education. Mid-South became the only vocational technical school to take this additional step. The Board of Trustees considered conversion to a community college essential to address the weak economy, unemployment, and alarmingly low college-attendance rate in Crittenden County. The State Board of Higher Education approved the application for conversion on October 23, 1992. A steering committee proposed a county-wide levy of four mills, a recommendation ratified by the Mid-South Technical College Board of Trustees. The voters of Crit-

tenden County put their stamp of approval on the effort with overwhelming support on February 16, 1993. Later that year, the State Board of Higher Education granted the College authority to offer its first degree.

PROGRAMS OF STUDY

ASU Mid-South offers degree and certificate programs to meet student and community needs. Program courses address general education knowledge as well as behaviors needed for good citizenship and successful careers.

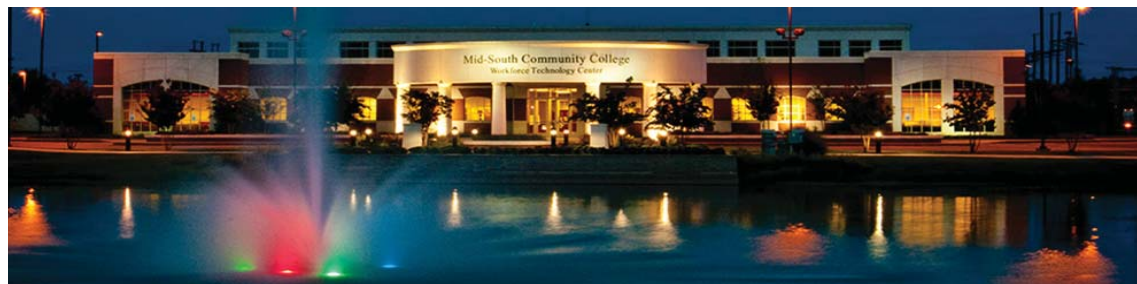
Programs offered are Aviation Technology, Business, Diesel Technology, Digital Media, Emergency Tech, General Education, Hospitality, Information Technology, Machine Technology, Mechatronics, Medical Assistant, Nursing Assistant, Process Control, Respiratory Therapy, Teaching, and Welding Technology.

ARKANSAS STATE UNIVERSITY MID-SOUTH

2000 West Broadway
West Memphis, AR 72301
(870)733-6722
www.midsouthcc.edu

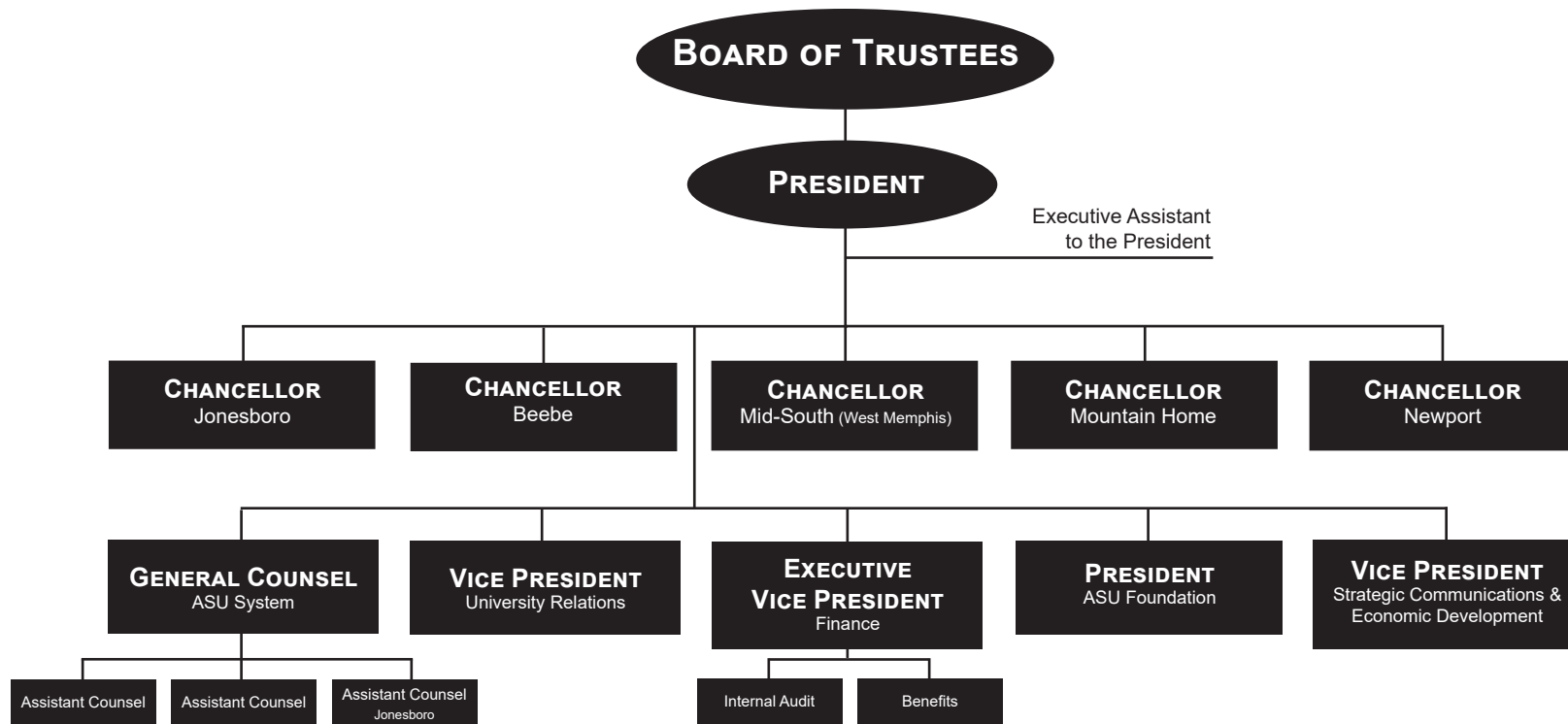
ACCREDITATION

ASU Mid-South is accredited by the Higher Learning Commission of the North Central Association of Colleges and Schools. ASU Mid-South's Nursing Assistant Program is certified by the Arkansas Department of Human Services Division of Medical Services Office of Long Term Care. The Emergency Medical Assistant Program is certified by the Arkansas Department of Health Section of Emergency Medical Services. The Pharmacy Technology program is accredited by the American Society of Health-System Pharmacists. The Respiratory Care program is accredited by the Commission on Accreditation for Respiratory Care (CoARC).



Arkansas State University System

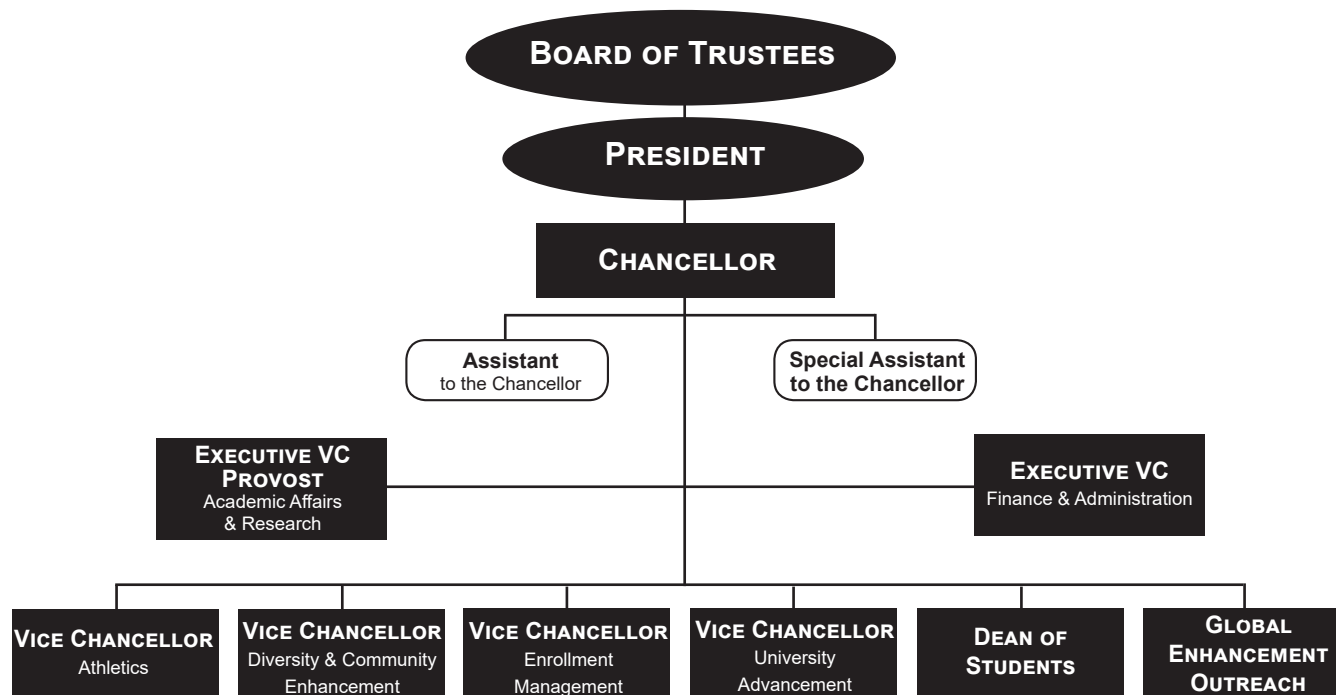
2018-2019 Organizational Structure



Arkansas State University

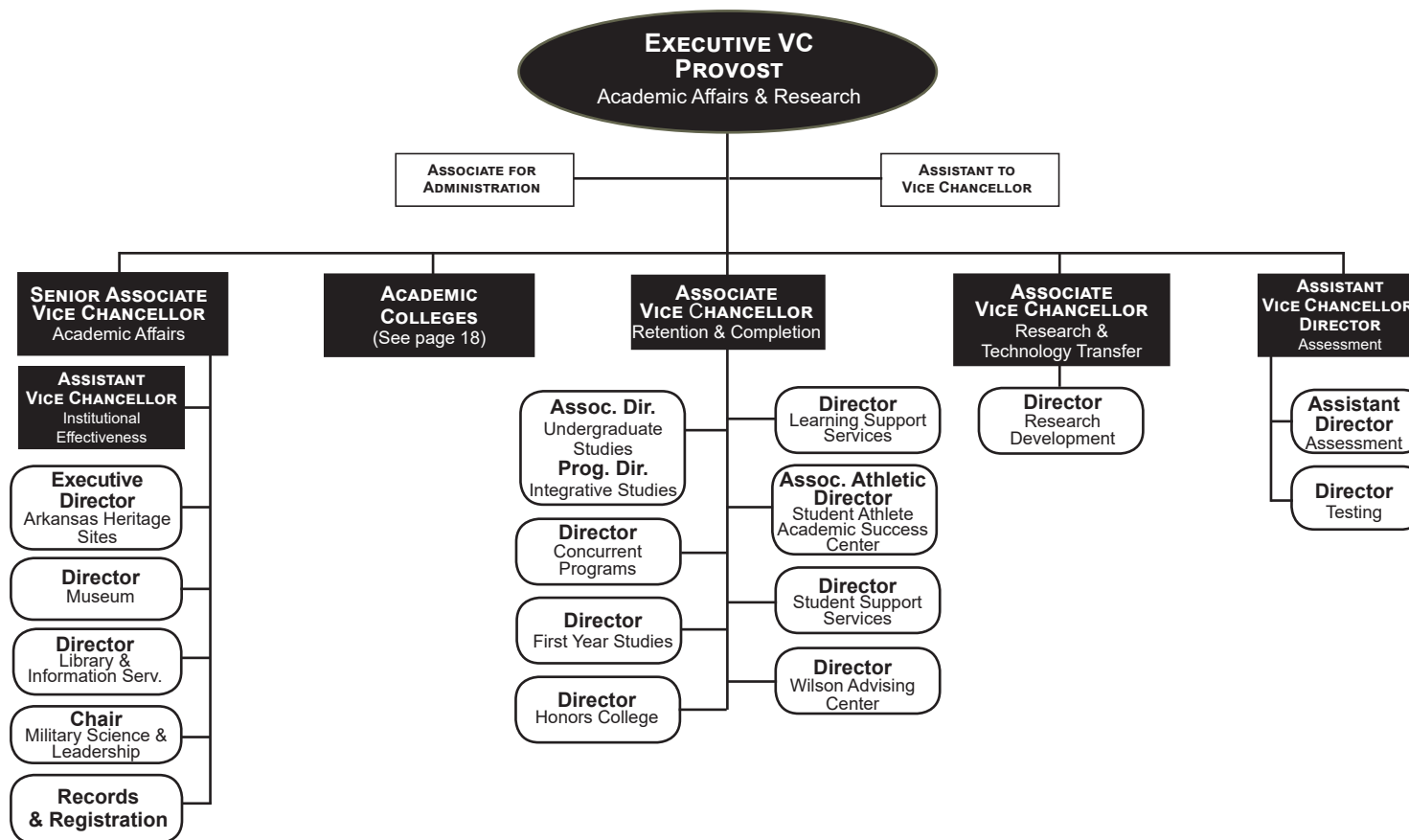


2018-2019 Organizational Structure



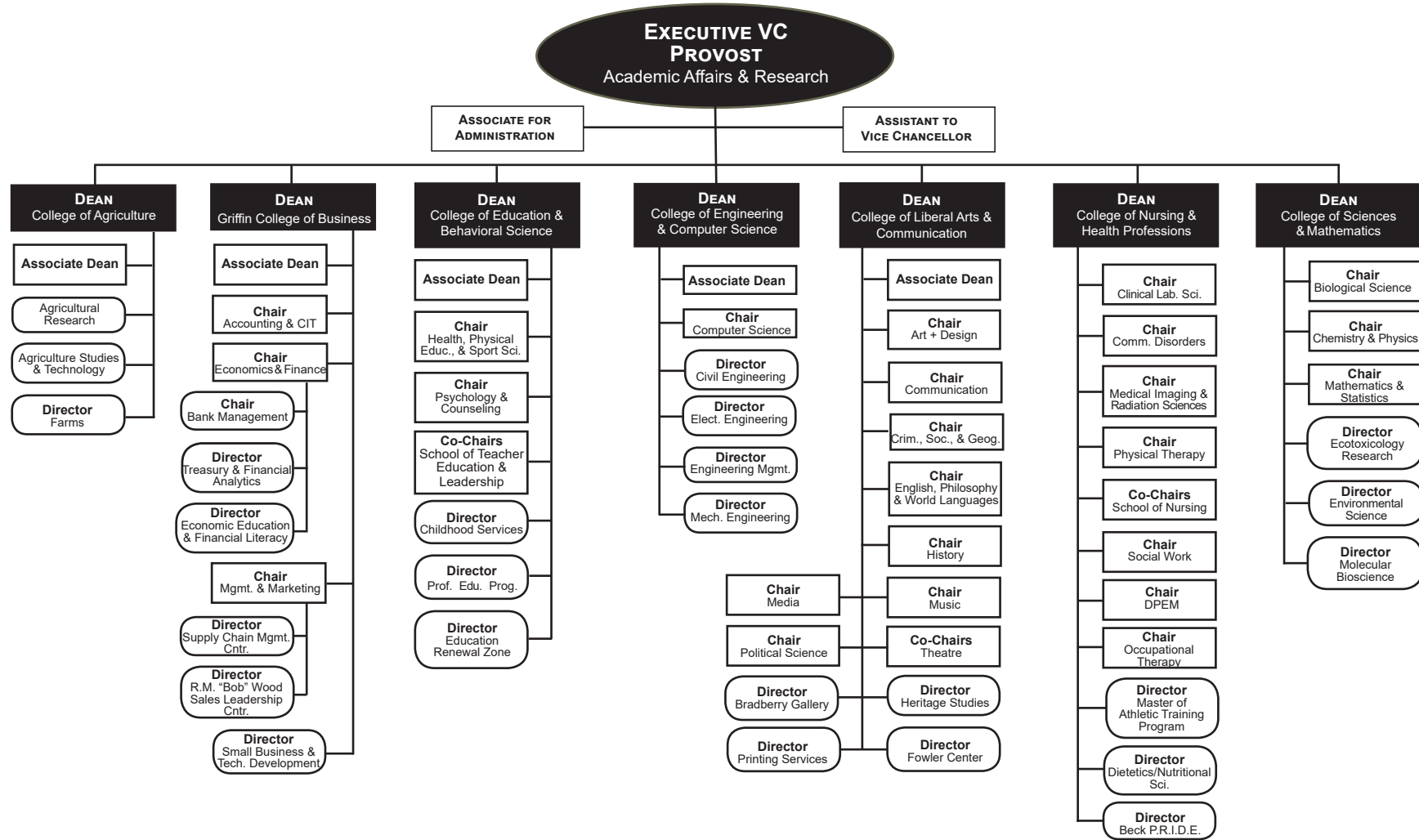
Academic Affairs & Research, A-State

2018-2019 Organizational Structure



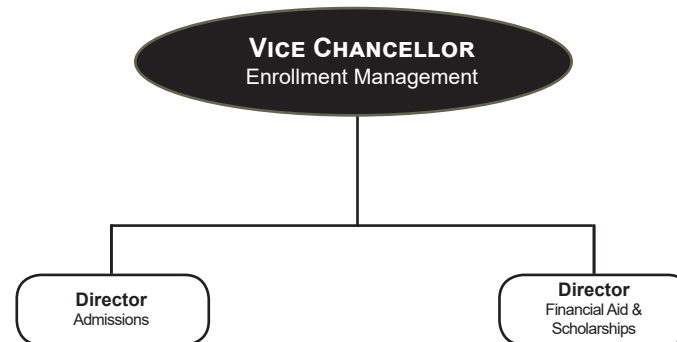
Academic Affairs & Research, A-State

2018-2019 Organizational Structure



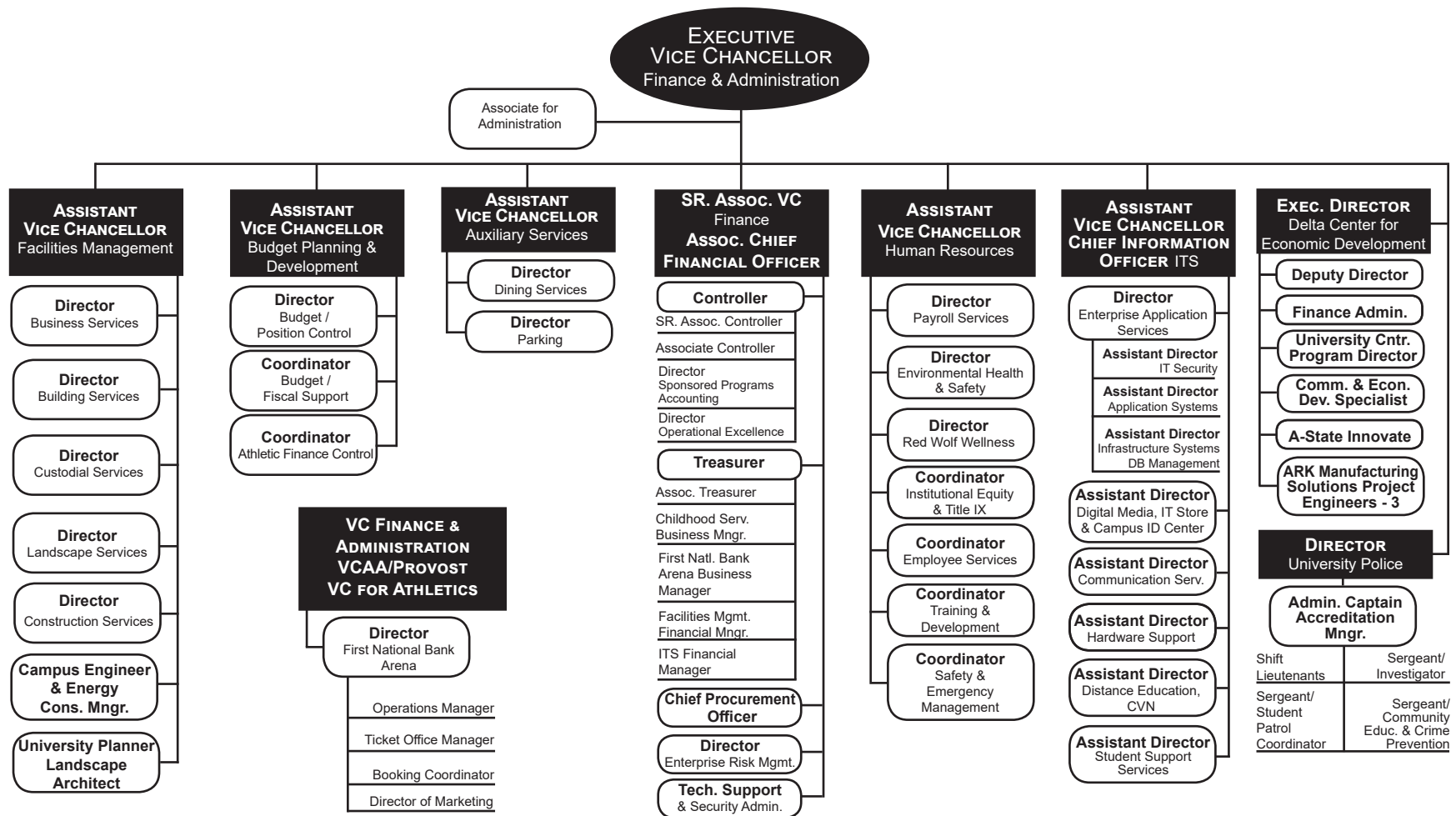
Enrollment Management, A-State

2018-2019 Organizational Structure



Finance & Administration, A-State

2018-2019 Organizational Structure

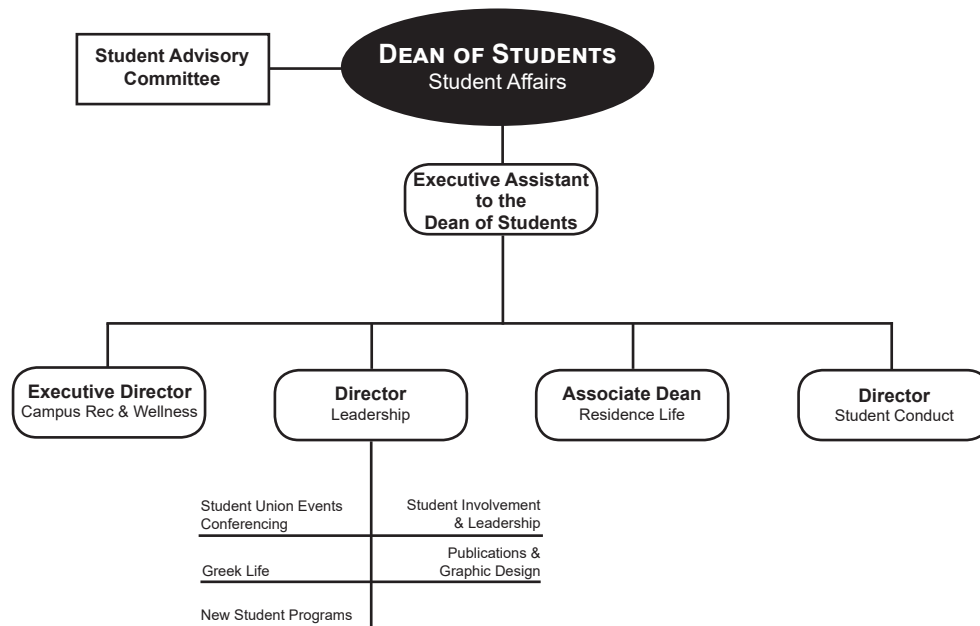


Data Source: Office of Finance & Administration, Arkansas State University
 Information Source: The Office of Institutional Effectiveness: web address: www.AState.edu/irp; email address: asuipr@AState.edu

Student Affairs, A-State



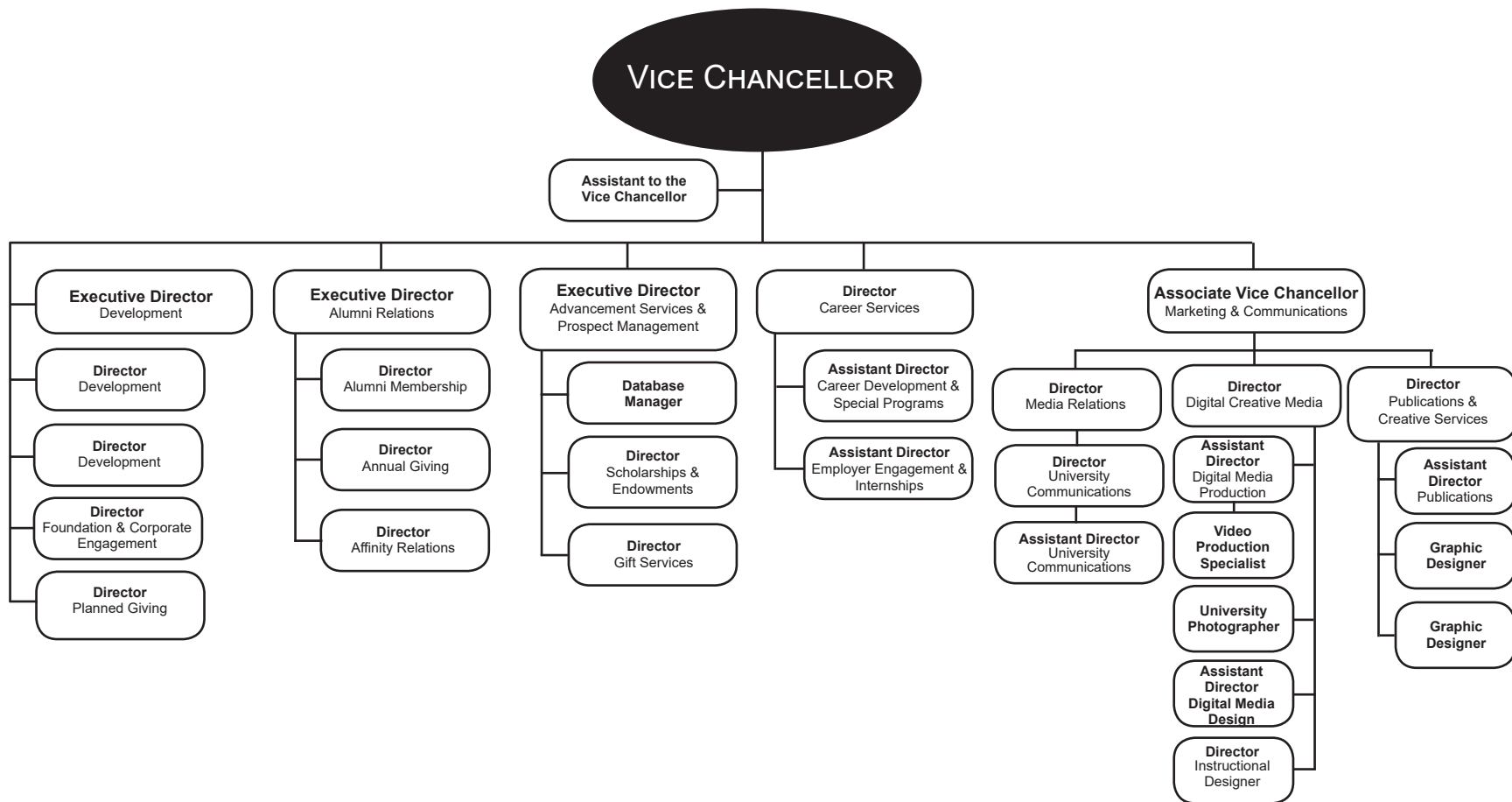
2018-2019 Organizational Structure



University Advancement, A-State



2018-2019 Organizational Structure



Data Source: Office of University Advancement, Arkansas State University
 Information Source: The Office of Institutional Effectiveness: web address: www.AState.edu/irp; email address: asuipr@AState.edu

Institutional Classifications

Southern Regional Education Board (SREB) & Carnegie Foundation

SREB CLASSIFICATIONS

The SREB system for categorizing postsecondary education institutions is based upon a number of factors relevant to determining resource requirements. Differences in institutional size (*number of degrees*), role (*types of degrees*), breadth of program offerings (*number of program areas in which degrees are granted*), and comprehensiveness (*distribution of degrees across program areas*) are the factors upon which institutions are classified.

Institutions are assigned to categories for a report year using the previous academic year's data on program completions. To keep the statistical comparison groups relatively stable over time and to assure that institutions change categories only when their measures on a criterion are relatively stable, institutions change categories when they meet the criterion for another category for the third consecutive year.

♦ **Four-Year 1:** Institutions awarding at least 100 doctoral degrees distributed among at least 10 CIP categories (2-digit classification) with no more than 50 percent in any one category. (*University of Arkansas-Fayetteville*)

♦ **Four-Year 2:** Institutions awarding at least 30 doctoral degrees distributed among at least 5 CIP categories.

♦ **Four-Year 3:** Institutions awarding at least 100 master's, education specialist, post-master's, or doctoral degrees with master's, education specialist, and post-master's degrees distributed among at least 10 CIP categories. (*Arkansas State University, Arkansas Tech University, and University of Central Arkansas*)

♦ **Two-Year 2:** Institutions awarding associate degrees and offering college transfer courses with FTE enrollment of between 2,000 and 4,999. (*Arkansas State University-Beebe*)

♦ **Two-Year 3:** Institutions awarding associate degrees and offering college transfer courses with FTE enrollment of less than 2,000. (*Arkansas State University-Mountain Home, Arkansas State University-Newport and Arkansas State University Mid-South*)

SREB FOUR-YEAR 3 PEER UNIVERSITIES

Alabama: *Alabama A&M University, Jacksonville State University, Troy University, University of North Alabama, University of South Alabama*

Arkansas: *Arkansas State University, Arkansas Technical University, University of Central Arkansas*

Delaware: *Delaware State University*

Florida: *Florida A&M University, University of North Florida, University of West Florida*

Georgia: *Georgia Southern University, Kennesaw State University, University of West Georgia, Valdosta State University*

Kentucky: *Eastern Kentucky University, Moorehead State University, Murray State University, Northern Kentucky University, Western Kentucky University*

Louisiana: *Southeastern Louisiana University, Southern University A&M at Baton Rouge, University of Louisiana at Monroe*

Maryland: *Towson University, University of Baltimore*

North Carolina: *Appalachian State University, North Carolina A&T State University, North Carolina Central University, University of North Carolina-Wilmington, Western Carolina University*

Oklahoma: *Northeastern State University, University of Central Oklahoma*

South Carolina: *College of Charleston, The Citadel, Winthrop University*

Tennessee: *Austin Peay State University, Middle Tennessee State University, Tennessee Technological University, University of Tennessee at Chattanooga*

Texas: *Angelo State University, Lamar University, Midwestern State University, Prairie View A&M University, Sam Houston State University, Stephen F. Austin State University, Sul Ross State University, Tarleton State University, Texas A&M International University, Texas A&M University Commerce, Texas A&M University Corpus Christi, Texas A&M University Kingsville, Texas Southern University, University of Houston Clear Lake, University of Texas-Tyler, University of Texas of the Permian Basin, West Texas A&M University, University of Texas - Rio Grande Valley*

Virginia: *James Madison University, Longwood University, Norfolk State University, Radford University, University of Mary Washington, Virginia State University*

West Virginia: *Marshall University*

CARNEGIE CLASSIFICATION

The Carnegie Commission developed a classification of colleges and universities to support its program of research and policy analysis. They are organized around three fundamental questions: what is taught (*Undergraduate & Graduate Instructional Programs*), who are the students (*Enrollment Profile & Undergraduate Profile*), and what is the setting (*Size & Setting*).

A-State's Classifications by Category*

Basic: (Doctorial Universities: R2, High research activity) Institutions that awarded at least 20 research/scholarship doctoral degrees during the update year and also institutions with below 20 research/scholarship doctoral degrees that awarded at least 30 professional practice doctoral degrees in at least 2 programs.

Size & Setting: (M4/R - Medium four-year, primarily residential) *Fall FTE enrollment of 3,000 - 9,999 degree seeking students at these bachelor's or higher degree granting institutions. 25-49 percent of degree-seeking undergraduates live on campus and at least 50 percent attend full time.*

Enrollment Profile: (HU - High undergraduate) *Fall enrollment data show both undergraduate and graduate/professional students, with the graduate enrollment accounting for less than 10-24% of FTE enrollment.*

Undergraduate Profile: (FT4/I - Four-year, medium full-time, selective, lower transfer-in) *Fall enrollment data show at least 60-79% of undergraduates enrolled full-time at these bachelor's or higher degree granting institutions. Test score data for first-year students indicate that these institutions are selective or more selective in admissions. Fewer than 20 percent of entering undergraduates are transfer students.*

Undergraduate Instructional Program: (Prof+A&S/SGC - Professions plus arts & sciences, some graduate coexistence) *60-79% of bachelor's degree majors were in professional fields, and graduate degrees were observed in up to half of the fields corresponding to undergraduate majors.*

Graduate Instructional Program: (Research Doctoral: Professional-dominant) *These institutions award research doctoral degrees in a range of fields, and the largest number of research doctorates were in professions other than engineering (such as education, health professions, law, public policy, or social work).*

*NOTE: The most recent Carnegie Classifications are based on time-specific snapshots of institutional attributes and behavior based on data from 2017/2018.
Data Source: Southern Regional Education Board & The Carnegie Foundation
Information Source: The Office of Institutional Effectiveness: web address: www.AState.edu/irp; email address: asuipr@AState.edu



Academics

Undergraduate Academic Programs

Arkansas State University

Associate Degree Programs

ASSOCIATE IN APPLIED SCIENCE
Clinical Laboratory Science
Crime Scene Investigation
Disaster Preparedness & Emergency Management
Law Enforcement
Law Enforcement Administration
Occupational Therapy Assistant
Paramedic
Physical Therapist Assistant

ASSOCIATE IN APPLIED SCIENCE IN NURSING
Nursing

ASSOCIATE IN GENERAL STUDIES
General Studies

ASSOCIATE IN SCIENCE
Accounting
Computer & Information Technology
General Education
Liberal Arts
Technology

ASSOCIATE OF ARTS
General Education

Bachelor's Degree Programs

BACHELOR OF APPLIED SCIENCE
Organizational Supervision

BACHELOR OF ARTS
Art
Chemistry
Communication Studies
Computer Science

BACHELOR OF ARTS (CONT.)
Criminology
Economics
English
Environmental Studies
History
Music
Philosophy
Political Science
Sociology
Theatre
World Languages & Cultures

BACHELOR OF FINE ARTS
Art
Graphic Design

BACHELOR OF GENERAL STUDIES
General Studies

BACHELOR OF MUSIC
Music Performance

BACHELOR OF MUSIC EDUCATION
Instrumental Music Education
Vocal Music Education

BACHELOR OF SCIENCE
Accounting
Biological Sciences
Biotechnology
Business Administration
Business Economics
Chemistry
Clinical Laboratory Science
Communication Disorders
Computer & Information Technology

BACHELOR OF SCIENCE (CONT.)
Computer Science
Creative Media Production
Dietetics
Digital Innovation
Disaster Preparedness & Emergency Management
Environmental Sciences
Exercise Science
Finance
Global Supply Chain Management
Health Promotion
Health Studies
Interdisciplinary Studies
International Business
Management
Marketing
Mathematics
Multimedia Journalism
Physics
Psychology
Sport Management
Strategic Communications
Technology
Wildlife, Fisheries & Conservation

BACHELOR OF SCIENCE IN AGRICULTURE
Agricultural Business
Agricultural Studies
Animal Science
Plant Science

BACHELOR OF SCIENCE IN EDUCATION
Biology Education
Business Technology Education

BACHELOR OF SCIENCE IN EDUCATION (CONT.)
Chemistry Education
Elementary Education
English Education
Mathematics Education
Middle Level Education
Physical Education
Physics Education
Social Science Education
Special Education, K-12
World Languages & Cultures Education

BACHELOR OF SCIENCE IN ENGINEERING
Engineering

BACHELOR OF SCIENCE IN CIVIL ENGINEERING
Civil Engineering

BACHELOR OF SCIENCE IN ELECTRICAL ENGINEERING
Electrical Engineering

BACHELOR OF SCIENCE IN MECHANICAL ENGINEERING
Mechanical Engineering

BACHELOR OF SCIENCE IN NURSING
Nursing

BACHELOR OF SCIENCE IN RADIOLOGIC SCIENCES
Radiologic Sciences

BACHELOR OF SOCIAL WORK
Social Work

Graduate Academic Programs

Arkansas State University

Certificate Programs

Addiction Studies
Building Level Administration
Clinical Mental Health Counseling
Computer Science Education
Curriculum Director
Cyber Security
Data Science
Dyslexia Therapy
Gifted Talented Creative Teacher
Gifted Talented Director
Health Care Emergency Management
Health Communications
High Performance Computing
History
Marketing
Nurse Educator
Nursing Administrator
Play Therapy
Special Education Director
Special Education Teacher
Student Affairs
Superintendent

Master's Degree Programs

MASTER OF ACCOUNTANCY
Accounting

MASTER OF ARTS
Biological Sciences
Communication Studies
Criminal Justice
English
Heritage Studies
History
Political Science
Sociology

MASTER OF ARTS IN TEACHING
Teaching

MASTER OF ATHLETIC TRAINING
Athletic Training

MASTER OF BUSINESS ADMINISTRATION
Business Administration

MASTER OF COMMUNICATION DISORDERS
Communication Disorders

MASTER OF ENGINEERING MANAGEMENT
Engineering Management

MASTER OF MUSIC
Music Performance

MASTER OF MUSIC EDUCATION
Music Education

MASTER OF PUBLIC ADMINISTRATION
Public Administration

MASTER OF SCIENCE
Biology
Chemistry
College Student Personnel Services
Computer Science
Disaster Preparedness & Emergency
Management
Early Childhood Services
Environmental Science
Exercise Science
Mathematics
Media Management
Molecular Biosciences
Psychological Science
Sports Administration
Strategic Communication

MASTER OF SCIENCE IN AGRICULTURE
Agriculture

MASTER OF SCIENCE IN EDUCATION
Biology Education
Chemistry Education
Computer Science Education
Curriculum & Instruction
Early Childhood Education
Educational Leadership
Educational Theory & Practice
English Education
Mathematics Education
Middle Level Education
Physical Education
Reading Education
School Counseling
Social Science Education
Special Education;
Gifted, Talented & Creative
Special Education, K-12

MASTER OF SCIENCE IN ENGINEERING
Engineering

MASTER OF SCIENCE IN MASS COMMUNICATIONS
Mass Communications

MASTER OF SCIENCE IN NURSING
Nurse Anesthesia
Nursing

MASTER OF SOCIAL WORK
Social Work

PROFESSIONAL SCIENCE MASTERS
Biotechnology

Specialist Degree Programs

SPECIALIST IN COMMUNITY COLLEGE TEACHING

EDUCATION SPECIALIST
Educational Leadership
Psychology & Counseling
Reading

POSTMASTER'S CERTIFICATE
Adult Gerontology
Family Nurse Practitioner

Doctoral Degree Programs

DOCTOR OF EDUCATION
Educational Leadership

DOCTOR OF NURSING PRACTICE
Nurse Anesthesia
Nursing Practice

DOCTOR OF OCCUPATIONAL THERAPY
Occupational Therapy

DOCTOR OF PHILOSOPHY
Environmental Science
Heritage Studies
Molecular Biosciences

DOCTOR OF PHYSICAL THERAPY
Physical Therapy

Associate Degree Programs - Other ASU Campuses

Beebe, Mountain Home, Newport & Mid-South

ASU-Beebe

ASSOCIATE OF APPLIED SCIENCE
Agriculture Equipment Technology
Automotive Technician
Business Technology
Computer-Aided Drafting & Design
Computer Coding
Computer Machining Technician
Computer Systems & Networking Tech.
Criminal Justice
Early Childhood Education
Emergency Medical Service
General Technology
Hospitality Administration
Medical Laboratory Technology
Pharmacy Technician
Veterinary Technology
Welding Technology

ASSOCIATE OF ARTS
Liberal Arts

ASSOCIATE OF FINE ARTS
Fine Arts

ASSOCIATE OF GENERAL EDUCATION
General Studies

ASSOCIATE OF SCIENCE
Agriculture
Business
Computer Information Systems
Criminal Justice
Education
Health Sciences
Liberal Arts & Sciences

ASU-Mountain Home

ASSOCIATE OF APPLIED SCIENCE
Business Administration
Criminal Justice
Digital Design
Funeral Science
Hospitality Management
Information Systems Technology
Nursing
Paramedic Technology
Program/Mobile Development
Welding Technology
Workforce Technology

ASSOCIATE OF ARTS
General Education

ASSOCIATE OF GENERAL STUDIES
General Studies

ASSOCIATE OF SCIENCE
Agriculture & Natural Resources
Business
Criminal Justice
Education

ASU-Newport

ASSOCIATE OF APPLIED SCIENCE
Agriculture Technology
Automotive Service Technology
Business Technology
Collision Repair Technology
Computer Networking Technology
Crime Scene Investigation
Energy Control Technology
General Technology
Law Enforcement Administration
Nursing
Paramedic
Surgical Technician
Registered Nursing

ASSOCIATE OF ARTS
Liberal Arts

ASSOCIATE OF ARTS IN TEACHING
Teaching

ASSOCIATE OF GENERAL STUDIES
General Studies

ASSOCIATE OF SCIENCE
Business
Criminal Justice
Education
Liberal Arts & Science
Natural Sciences

ASU Mid-South

ASSOCIATE OF APPLIED SCIENCE
Aviation Maintenance Technology
Business Technologies
Digital Media
General Technology
Hospitality Management
Information Systems Technology
Medical Assistant
Respiratory Care

ASSOCIATE OF ARTS
General Education

ASSOCIATE OF SCIENCE
Business
Education
Hospitality Management

Degrees & Certificates Awarded Summary

By Fiscal Year

Degrees & Certificates Awarded - Jonesboro Campus										
	Fiscal Years					Percentage of Total by Attribute				
	2014	2015	2016	2017	2018	2014	2015	2016	2017	2018
Total Degrees/Certificates Awarded	3,780	3,778	3,987	4,435	4,746					
Certificate of Proficiency	0	0	0	1	6	0.0%	0.0%	0.0%	<0.1%	0.1%
Associate	392	382	512	554	586	10.4%	10.1%	12.8%	12.5%	12.3%
Bachelor's	1,824	1,766	1,713	1,782	1,837	48.3%	46.7%	43.0%	40.2%	38.7%
Graduate Certificate	12	15	23	30	93	0.3%	0.4%	0.6%	0.7%	2.0%
Master's	1,316	1,251	1,358	1,591	1,687	34.8%	33.1%	34.1%	35.9%	35.5%
Specialist	191	321	330	414	486	5.1%	8.5%	8.3%	9.3%	10.2%
Doctoral	45	43	51	63	51	1.2%	1.1%	1.3%	1.4%	1.1%

HISTORICAL DEGREES & CERTIFICATES AWARDED

Campuses	Fiscal Years				
	2014	2015	2016	2017	2018
Certificates Awarded by Campus					
Jonesboro	12	15	23	31	99
Beebe	945	1,015	1,021	936	871
Mtn. Home	334	324	330	420	372
Newport	359	432	569	631	824
Mid-South	--	219	316	413	319
Total Certificates	1,650	2,005	2,259	2,431	2,485
Degrees Awarded by Campus					
Jonesboro	3,768	3,763	3,964	4,404	4,647
Beebe	659	672	767	674	582
Mtn. Home	249	272	241	243	227
Newport	178	199	238	238	238
Mid-South	--	130	127	143	139
Total Degrees	4,854	5,036	5,337	5,702	5,833
Total Awards	6,504	7,041	7,596	8,133	8,318

DEGREES AWARDED BY ETHNICITY

Jonesboro Campus - Fiscal Year 2018

Ethnicity	Degrees					Total Degrees
	Associate	Bachelor's	Master's	Specialist	Doctoral	
African American	95	196	168	88	6	553
American Indian	2	9	9	3	0	23
Asian American	5	14	8	0	2	29
Hispanic American	11	39	29	10	2	91
Hawaiian/Pacific Islander	0	2	1	0	2	5
Two or More Races	12	34	19	11	1	77
White American	449	1,445	1,302	365	36	3,597
Ethnicity Unknown	5	20	41	9	1	76
International	7	78	110	0	1	196

Data Sources: ADHE Degrees and Certificates Awarded by Arkansas Higher Education Institutions
 Information Source: The Office of Institutional Effectiveness: web address: www.AState.edu/irp; email address: asuip@AState.edu

Degrees Awarded by College & Department

Jonesboro Campus - Fiscal Year 2018

College/Department/Program	Degrees/Certificates		
	Undergraduate	Graduate	Total
COLLEGE OF AGRICULTURE			
Agriculture	94	19	113
Technology	20	0	20
Total Agriculture Degrees	114	19	133
COLLEGE OF BUSINESS			
Accounting	54	10	64
Computer & Information Technology	22	0	22
Economics & Finance	130	42	172
Management & Marketing	108	0	108
Total Business Degrees	314	52	366
COLLEGE OF EDUCATION & BEHAVIORAL SCIENCE			
Health, Physical Education & Sport Sciences	123	75	198
Psychology & Counseling	65	46	111
School of Teacher Education & Leadership	113	1,670	1,783
Total Education & Behavioral Science Degrees	301	1,791	2,092
COLLEGE OF ENGINEERING & COMPUTER SCIENCE			
Computer Science	17	46	63
Engineering	52	29	81
Total Engineering & Computer Sci. Degrees	69	75	144
COLLEGE OF LIBERAL ARTS & COMMUNICATIONS			
Art + Design	30	0	30
Communication	76	4	80
Criminology, Sociology & Geography	91	7	98
English & Philosophy	31	12	43
History	20	9	29
Media	33	10	43
Music	23	5	28
Political Science	19	100	119
Theatre	11	0	11
World Languages & Cultures	8	0	8
Heritage Studies Program	0	4	4
Total Liberal Arts & Comm. Degrees	342	151	493

College/Department/Program	Degrees/Certificates		
	Undergraduate	Graduate	Total
COLLEGE OF NURSING & HEALTH PROFESSIONS			
Clinical Laboratory Sciences	12	0	12
Communication Disorders	31	27	58
Medical Imaging & Radiation Sciences	22	0	22
Physical Therapy	39	27	66
School of Nursing	304	87	391
Social Work	54	43	97
Dietetics Program	8	0	8
Disaster Preparedness Program	25	15	40
Occupational Therapy Program	29	0	29
Total Nursing & Health Professions Degrees	524	199	723
COLLEGE OF SCIENCES & MATHEMATICS			
Biological Sciences	99	13	112
Chemistry & Physics	24	3	27
Mathematics & Statistics	20	7	27
Environmental Sciences Program	0	7	7
Molecular Biosciences Program	0	0	0
Total Sciences & Mathematics Degrees	143	30	173
UNDERGRADUATE STUDIES	622	0	622
TOTAL DEGREES/CERTIFICATES AWARDED	2,429	2,317	4,746

Degrees Awarded by Undergraduate Program

Jonesboro Campus - Fiscal Year 2018

Associate Degree Programs

COLLEGE OF BUSINESS

AS	Computer & Information Tech.....	4
AS	Accounting.....	1

COLLEGE OF NURSING & HEALTH PROFESSIONS

AASN	Nursing.....	93
AAS	Physical Therapist Assistant.....	39
AAS	Occupational Therapy Assistant.....	29
AAS	Disaster Preparedness & Emergency Management.....	1
AAS	Paramedic.....	1

UNDERGRADUATE STUDIES

AS	General Education.....	310
AA	General Education.....	80
AGS	General Studies.....	28

Top Five Bachelor's Degree Programs by Number of Degrees Awarded

BSN	Nursing.....	184
BGS	General Studies.....	141
BS	Biological Sciences.....	86
BSE	Elementary Education.....	80
BS	Exercise Science.....	69

Bachelor's Degree Programs

COLLEGE OF AGRICULTURE

BSA	Agricultural Business.....	39
BSA	Plant Science.....	31
BS	Technology.....	20
BSA	Animal Science.....	16
BSA	Agricultural Studies.....	7
BAS	Applied Science.....	1

COLLEGE OF BUSINESS

BS	Business Administration.....	61
BS	Finance.....	56
BS	Accounting.....	53
BS	Management.....	46
BS	Marketing.....	45
BS	Computer & Information Technology.....	18
BA	Economics.....	10
BS	Global Supply Chain Mgmt.....	10
BS	International Business.....	7
BSE	Business Economics.....	3

COLLEGE OF EDUCATION & BEHAVIORAL SCIENCE

BSE	Elementary Education.....	80
BS	Exercise Science.....	69
BS	Psychology.....	65
BSE	Middle Level Education.....	29
BS	Sport Management.....	21
BSE	Physical Education.....	19
BS	Athletic Training.....	8
BS	Health Promotion.....	6
BSE	Special Education K-12.....	4

COLLEGE OF ENGINEERING & COMPUTER SCIENCE

BSME	Mechanical Engineering.....	26
BS	Computer Science.....	14
BSCE	Civil Engineering.....	13
BSEE	Electrical Engineering.....	13
BA	Computer Science.....	3

COLLEGE OF LIBERAL ARTS & COMMUNICATION

BA	Criminology.....	62
BA	Communication Studies.....	39
BS	Strategic Communications.....	37
BA	Sociology.....	29
BS	Creative Media Production.....	24
BA	Political Science.....	19
BA	English.....	18
BFA	Art.....	17
BA	History.....	14
BFA	Graphic Design.....	12
BA	Theatre.....	11
BSE	English Education.....	10
BA	World Languages & Cultures.....	7
BM	Music Performance.....	7
BS	Multimedia Journalism.....	7
BME	Instrumental Music Education.....	6
BSE	Social Science Education.....	6
BA	Music.....	5
BME	Vocal Music Education.....	5
BA	Philosophy.....	3
BS	Journalism.....	2
BA	Art.....	1
BSE	World Languages & Cultures.....	1

COLLEGE OF NURSING & HEALTH PROFESSIONS

BSN	Nursing.....	184
BSW	Social Work.....	54
BS	Communication Disorders.....	31
BS	Health Studies.....	27
BSRS	Radiologic Sciences.....	22
BS	Disaster Preparedness & Emergency Management.....	17
BS	Clinical Laboratory Science.....	12
BS	Dietetics.....	8

COLLEGE OF SCIENCES & MATHEMATICS

BS	Biological Sciences.....	86
BA	Chemistry.....	15
BS	Mathematics.....	10
BSE	Mathematics Education.....	10
BS	Wildlife Fisheries & Conservation.....	7
BS	Chemistry.....	5
BS	Physics.....	4
BSE	Biology Education.....	4
BS	Biotechnology.....	2

UNDERGRADUATE STUDIES

BGS	General Studies.....	141
BS	Interdisciplinary Studies.....	63

TOTAL UNDERGRADUATE DEGREES/ CERTIFICATES AWARDED2,429

Degrees Awarded by Graduate Program

Jonesboro Campus - Fiscal Year 2018

Graduate Certificates

COLLEGE OF EDUCATION & BEHAVIORAL SCIENCE

GCert Building Level Administration	29
GCert Special Education Teacher	18
GCert Special Education Director	14
GCert Curriculum Director	6
GCert Gifted, Talented & Creative Teacher	5
GCert Superintendent	1

COLLEGE OF NURSING & HEALTH PROFESSIONS

GCert Addiction Studies	20
-------------------------------	----

Master's Degree Programs

COLLEGE OF AGRICULTURE

MSA Agriculture	19
-----------------------	----

COLLEGE OF BUSINESS

MBA Business Administration	42
MACC Accounting	10

COLLEGE OF EDUCATION & BEHAVIORAL SCIENCE

MSE Educational Leadership	457
MSE Educational Theory & Practice	191
MSE Special Education K-12	135
MSE Reading Education	122
MSE Special Ed., Gifted, Talented & Creative ..	102
MSE Curriculum & Instruction	74
MS Sports Administration	62
MS College Student Personnel Services	23
MS Early Childhood Services	19
MS Exercise Science	12
MAT Teaching	11
MSE Special Ed., Instructional Specialist, 4-12 ..	5
MS Psychological Science	3
MRC Rehabilitation Counseling	1
MSE Early Childhood Education	1
MSE Physical Education	1

COLLEGE OF ENGINEERING & COMPUTER SCIENCE

MS Computer Science	46
MEM Engineering Management	22
MSEN Engineering	7

COLLEGE OF LIBERAL ARTS & COMMUNICATION

MPA Public Administration	99
MA English	10
MA History	8
MSMC Radio-Television	5
MA Communication Studies	4
MA Sociology	4
MM Music Performance	4
MSMC Journalism	4
MA Criminal Justice	3
MSE English Education	2
MA Political Science	1
MME Music Education	1
MS Media Management	1
MSE Social Science Education	1

COLLEGE OF NURSING & HEALTH PROFESSIONS

MSW Social Work	43
MSN Nurse Anesthesia	33
MSN Nursing	30
MCD Communication Disorders	27
MS Disaster Preparedness	15
MS Health Sciences	1

COLLEGE OF SCIENCES & MATHEMATICS

MS Biology	10
MS Mathematics	5
MS Chemistry	3
MS Environmental Science	3
MSE Biology Education	2
MSE Mathematics Education	2
MA Biological Sciences	1

Specialist Degree Programs

COLLEGE OF EDUCATION & BEHAVIORAL SCIENCE

EDS Educational Leadership	462
EDS Psychology & Counseling	19
SCCT Community College Admin. Edu	5

Doctoral Degree Programs

COLLEGE OF EDUCATION & BEHAVIORAL SCIENCE

EDD Educational Leadership	13
----------------------------------	----

COLLEGE OF LIBERAL ARTS & COMMUNICATION

PHD Heritage Studies	4
----------------------------	---

COLLEGE OF NURSING & HEALTH PROFESSIONS

DPT Physical Therapy	27
DNP Nursing Practice	3

COLLEGE OF SCIENCES & MATHEMATICS

PHD Environmental Science	4
---------------------------------	---

TOTAL GRADUATE DEGREES AWARDED 2,317

Top Five Graduate Degree Programs by Number of Degrees Awarded

EDS Educational Leadership	462
MSE Educational Leadership	457
MSE Educational Theory & Practice	191
MSE Special Education, K-12	135
MSE Reading Education	122



Students

System Enrollment Summary

Jonesboro, Beebe*, Mtn. Home, Newport* & Mid-South - Fall 2018

Campus Student Enrollment

	Campuses						Percentage of Total by Attribute				
	A-State	ASUB	ASUMH	ASUN	ASUMS	Total	A-State	ASUB	ASUMH	ASUN	ASUMS
Total Headcount	13,709	3,446	1,345	2,275	1,423	22,198	61.8%	15.5%	6.1%	10.2%	6.4%
Full-Time**	7,456	1,779	605	1,040	356	11,236	66.4%	15.8%	5.4%	9.3%	3.2%
Part-Time	6,253	1,667	740	1,235	1,067	10,962	57.0%	15.2%	6.8%	11.3%	9.7%
Full-Time Equivalent (FTE)	9,656	2,338	854	1,468	739	15,055	64.1%	15.5%	5.7%	9.8%	4.9%
Semester Credit Hours	139,250	35,071	12,810	22,026	11,079	220,236	63.2%	15.9%	5.8%	10.0%	5.0%
Degrees/Certificates Awarded***	4,746	1,453	599	1,062	458	8,318	57.1%	17.5%	7.2%	12.8%	5.5%

Campus Student Demographics

	Campuses						Percentage of Total by Attribute				
	A-State	ASUB	ASUMH	ASUN	ASUMS	Total	A-State	ASUB	ASUMH	ASUN	ASUMS
Headcount by Age											
Under 25	8,405	2,697	898	1,656	1,107	14,763	56.9%	18.3%	6.1%	11.2%	7.5%
25 & Older	5,304	749	447	619	316	7,435	71.3%	10.1%	6.0%	8.3%	4.3%
Headcount by Gender											
Male	5,175	1,377	542	904	528	8,526	60.7%	16.2%	6.4%	10.6%	6.2%
Female	8,534	2,069	803	1,371	895	13,672	62.4%	15.1%	5.9%	10.0%	6.5%
Headcount by Ethnicity+											
African American	1,737	237	8	319	790	3,091	56.2%	7.7%	0.3%	10.3%	25.6%
White American	10,281	2,784	1,137	1,722	503	16,427	62.6%	16.9%	6.9%	10.5%	3.1%
Other Ethnicity	1,691	425	200	234	130	2,680	63.1%	15.9%	7.5%	8.7%	4.9%

*NOTE: Beebe's enrollment includes Heber Springs and Searcy. Newport's enrollment includes the Commercial Driving Technical Certificate Program, the ASU Technical Center at Marked Tree and the Jonesboro Technical Center.

**NOTE: A "full-time" undergraduate student load is 12 or more semester credits, and a "full-time" graduate student load is 9 or more semester credits.

***NOTE: Degrees/Certificates Awarded represents degrees conferred during fiscal year 2017-2018.

**NOTE: "Other" includes students reported as American Indian/Alaskan Native, Asian American, Hispanic American, Native Hawaiian/Pacific Islander, those reporting two or more races, International and those whose ethnicity is unknown.

Data Sources: Institutional Research Office, Arkansas State University-Beebe; Registrar's Office, Arkansas State University-Mountain Home; Arkansas State University-Newport and Arkansas State University Mid-South.

Information Source: The Office of Institutional Effectiveness; web address: www.AState.edu/irp; email address: asuipr@AState.edu

Total Enrollment

Jonesboro Campus - Fall 2014 to Fall 2018

Total Enrollment										
	Fall Semesters					Percentage of Total Enrollment				
	2014	2015	2016	2017	2018	2014	2015	2016	2017	2018
Total Headcount	13,144	13,410	14,085	13,930	13,709					
Undergraduate	9,857	9,592	9,839	9,604	9,350	75.0%	71.5%	69.9%	68.9%	68.2%
Graduate	3,287	3,818	4,246	4,326	4,359	25.0%	28.5%	30.1%	31.1%	31.8%
Headcount by Load										
Full-Time*	8,126	8,031	8,061	7,597	7,456	61.8%	59.9%	57.2%	54.5%	54.4%
Part-Time	5,018	5,379	6,024	6,333	6,253	38.2%	40.1%	42.8%	45.5%	45.6%
Full-Time Equivalent (FTE)	9,822	9,857	10,107	9,772	9,656					
Student Demographics										
	Fall Semesters					Percentage of Total Enrollment				
	2014	2015	2016	2017	2018	2014	2015	2016	2017	2018
Headcount by Age										
Under 25	8,315	8,376	8,627	8,471	8,405	63.3%	62.5%	61.2%	60.8%	61.3%
25 & Older	4,829	5,034	5,458	5,459	5,304	36.7%	37.5%	38.8%	39.2%	38.7%
Headcount by Gender										
Male	5,347	5,446	5,625	5,337	5,175	40.7%	40.6%	39.9%	38.3%	37.7%
Female	7,797	7,964	8,460	8,593	8,534	59.3%	59.4%	60.1%	61.7%	62.3%
Headcount by Ethnicity										
African American	1,834	1,788	1,836	1,831	1,737	14.0%	13.3%	13.0%	13.1%	12.7%
American Indian/Alaskan Native	71	54	59	54	49	0.5%	0.4%	0.4%	0.4%	0.4%
Asian American	102	111	116	118	126	0.8%	0.8%	0.8%	0.8%	0.9%
Hispanic American	293	324	350	358	414	2.2%	2.4%	2.5%	2.6%	3.0%
Native Hawaiian/Pacific Islander	16	12	10	7	5	0.1%	0.1%	0.1%	0.1%	<0.1%
Two or More Races	209	242	249	269	280	1.6%	1.8%	1.8%	1.9%	2.0%
White American	9,744	9,996	10,448	10,381	10,281	74.1%	74.5%	74.2%	74.5%	75.0%
Ethnicity Unknown	129	123	166	198	187	1.0%	0.9%	1.2%	1.4%	1.4%
International	746	760	851	714	630	5.7%	5.7%	6.0%	5.1%	4.6%

*NOTE: A "full-time" undergraduate student load is 12 or more semester credits, and a "full-time" graduate student load is 9 or more semester credits.
 Data Source: Student Enrollment Information
 Information Source: The Office of Institutional Effectiveness web address: www.AState.edu/irp; email address: asuip@AState.edu

Total Enrollment

Beebe Campus - Fall 2014 to Fall 2018

Total Enrollment										
	Fall Semesters					Percentage of Total Enrollment				
	2014	2015	2016	2017	2018	2014	2015	2016	2017	2018
Total Headcount	4,140	3,935	3,989	3,738	3,446					
Full-Time*	2,131	2,071	2,082	1,868	1,779	51.5%	52.6%	52.2%	50.0%	51.6%
Part-Time	2,009	1,864	1,907	1,870	1,667	48.5%	47.4%	47.8%	50.0%	48.4%
Full-Time Equivalent (FTE)	2,770	2,680	2,678	2,477	2,338					
Student Demographics										
	Fall Semesters					Percentage of Total Enrollment				
	2014	2015	2016	2017	2018	2014	2015	2016	2017	2018
Headcount by Age Categories										
Under 18	925	861	937	898	849	22.3%	21.9%	23.5%	24.0%	24.6%
18 to 19	1,289	1,264	1,210	1,170	1,109	31.1%	32.1%	30.3%	31.3%	32.2%
20 to 21	558	526	533	492	442	13.5%	13.4%	13.4%	13.2%	12.8%
22 to 24	414	365	362	326	297	10.0%	9.3%	9.1%	8.7%	8.6%
25 to 29	314	336	352	331	292	7.6%	8.5%	8.8%	8.9%	8.5%
30 to 44	467	397	413	360	324	11.3%	10.1%	10.4%	9.6%	9.4%
45 to 64	150	161	152	130	111	3.6%	4.1%	3.8%	3.5%	3.2%
65 & Over	23	25	30	31	22	0.6%	0.6%	0.8%	0.8%	0.6%
Age Unknown	0	0	0	0	0	0.0%	0.0%	0.0%	0.0%	0.0%
Headcount by Gender										
Male	1,802	1,771	1,721	1,519	1,377	43.5%	45.0%	43.1%	40.6%	40.0%
Female	2,338	2,164	2,268	2,219	2,069	56.5%	55.0%	56.9%	59.4%	60.0%
Headcount by Ethnicity**										
African American	201	242	243	230	237	4.9%	6.1%	6.1%	6.2%	6.9%
White American	3,470	3,260	3,280	2,974	2,784	83.8%	82.8%	82.2%	79.6%	80.8%
Other Ethnicity	469	433	466	534	425	11.3%	11.0%	11.7%	14.3%	12.3%

*NOTE: A "full-time" undergraduate student load is 12 or more semester credits.

**NOTE: "Other" includes students reported as American Indian/Alaskan Native, Asian American, Hispanic American, Hawaiian Native/Pacific Islander, those reporting two or more races, International and those whose ethnicity is unknown.

Data Sources: Beebe Student Enrollment; Institutional Research Office, Arkansas State University-Beebe

Information Source: The Office of Institutional Effectiveness; web address: www.AState.edu/irp; email address: asuip@AState.edu

Total Enrollment

Mountain Home Campus - Fall 2014 to Fall 2018

Total Enrollment										
	Fall Semesters					Percentage of Total Enrollment				
	2014	2015	2016	2017	2018	2014	2015	2016	2017	2018
Total Headcount	1,393	1,384	1,367	1,441	1,345					
Full-Time*	817	740	714	644	605	58.7%	53.5%	52.2%	44.7%	45.0%
Part-Time	576	644	653	797	740	41.3%	46.5%	47.8%	55.3%	55.0%
Full-Time Equivalent (FTE)	985	960	953	905	854					

Student Demographics										
	Fall Semesters					Percentage of Total Enrollment				
	2014	2015	2016	2017	2018	2014	2015	2016	2017	2018
Headcount by Age Categories										
Under 18	122	199	174	379	323	8.8%	14.4%	12.7%	26.3%	24.0%
18 to 19	346	330	342	333	331	24.8%	23.8%	25.0%	23.1%	24.6%
20 to 21	141	138	131	137	125	10.1%	10.0%	9.6%	9.5%	9.3%
22 to 24	145	115	133	117	119	10.4%	8.3%	9.7%	8.1%	8.8%
25 to 29	191	174	175	166	151	13.7%	12.6%	12.8%	11.5%	11.2%
30 to 44	295	280	263	202	212	21.2%	20.2%	19.2%	14.0%	15.8%
45 to 64	141	136	138	101	78	10.1%	9.8%	10.1%	7.0%	5.8%
65 & Over	12	12	11	6	6	0.9%	0.9%	0.8%	0.4%	0.4%
Age Unknown	0	0	0	0	0	0.0%	0.0%	0.0%	0.0%	0.0%
Headcount by Gender										
Male	529	517	577	603	542	38.0%	37.4%	42.2%	41.8%	40.3%
Female	864	867	790	838	803	62.0%	62.6%	57.8%	58.2%	59.7%
Headcount by Ethnicity**										
African American	9	8	10	8	8	0.6%	0.6%	0.7%	0.6%	0.6%
White American	1,248	1,239	1,245	1,135	1,137	89.6%	89.5%	91.1%	78.8%	84.5%
Other Ethnicity	136	137	112	298	200	9.8%	9.9%	8.2%	20.7%	14.9%

*NOTE: A "full-time" undergraduate student load is 12 or more semester credits.

**NOTE: "Other" includes students reported as American Indian/Alaskan Native, Asian American, Hispanic American, Hawaiian Native/Pacific Islander, those reporting two or more races, International and those whose ethnicity is unknown.

Data Sources: Mountain Home Student Enrollment; Registrar's Office, Arkansas State University-Mountain Home

Information Source: The Office of Institutional Effectiveness: web address: www.AState.edu/irp; email address: asuirp@AState.edu

Total Enrollment

Newport Campus - Fall 2014 to Fall 2018

Total Enrollment										
	Fall Semesters					Percentage of Total Enrollment				
	2014	2015	2016	2017	2018	2014	2015	2016	2017	2018
Total Headcount	2,481	2,652	2,718	2,512	2,275					
Full-Time*	1,000	1,032	1,057	1,095	1,040	40.3%	38.9%	38.9%	43.6%	45.7%
Part-Time	1,481	1,620	1,661	1,417	1,235	59.7%	61.1%	61.1%	56.4%	54.3%
Full-Time Equivalent (FTE)	1,376	1,482	1,568	1,607	1,468					

Student Demographics										
	Fall Semesters					Percentage of Total Enrollment				
	2014	2015	2016	2017	2018	2014	2015	2016	2017	2018
Headcount by Age Categories										
Under 18	761	828	831	586	500	30.7%	31.2%	30.6%	23.3%	22.0%
18 to 19	565	588	769	565	533	22.8%	22.2%	28.3%	22.5%	23.4%
20 to 21	267	305	376	371	347	10.8%	11.5%	13.8%	14.8%	15.3%
22 to 24	246	259	264	252	276	9.9%	9.8%	9.7%	10.0%	12.1%
25 to 29	215	226	250	255	218	8.7%	8.5%	9.2%	10.2%	9.6%
30 to 44	320	353	148	367	312	12.9%	13.3%	5.4%	14.6%	13.7%
45 to 64	97	86	76	110	82	3.9%	3.2%	2.8%	4.4%	3.6%
65 & Over	10	7	4	6	7	0.4%	0.3%	0.1%	0.2%	0.3%
Age Unknown	0	0	0	0	0	0.0%	0.0%	0.0%	0.0%	0.0%
Headcount by Gender										
Male	1,010	1,098	1,081	1,074	904	40.7%	41.4%	39.8%	42.8%	39.7%
Female	1,471	1,554	1,637	1,438	1,371	59.3%	58.6%	60.2%	57.2%	60.3%
Headcount by Ethnicity										
African American	386	451	417	388	319	15.6%	17.0%	15.3%	15.4%	14.0%
White American	1,812	1,873	1,964	1,873	1,722	73.0%	70.6%	72.3%	74.6%	75.7%
Other Ethnicity	283	328	337	251	234	11.4%	12.4%	12.4%	10.0%	10.3%

*NOTE: A "full-time" undergraduate student load is 12 or more semester credits.

**NOTE: "Other" includes students reported as American Indian/Alaskan Native, Asian American, Hispanic American, Hawaiian Native/Pacific Islander, those reporting two or more races, International and those whose ethnicity is unknown.

Data Sources: Newport Student Enrollment; Arkansas State University-Newport

Information Source: The Office of Institutional Effectiveness; web address: www.AState.edu/irp; email address: asuipr@AState.edu

Total Enrollment

Mid-South Campus - Fall 2015 to Fall 2018

Total Enrollment								
	Fall Semesters				Percentage of Total Enrollment			
	2015	2016	2017	2018	2015	2016	2017	2018
Total Headcount	1,896	1,836	1,561	1,423				
Full-Time*	570	530	437	356	30.1%	28.9%	28.0%	25.0%
Part-Time	1,326	1,306	1,124	1,067	69.9%	71.1%	72.0%	75.0%
Full-Time Equivalent (FTE)	1,033	993	841	739				

Student Demographics								
	Fall Semesters				Percentage of Total Enrollment			
	2015	2016	2017	2018	2015	2016	2017	2018
Headcount by Age Categories								
Under 18	789	774	622	649	41.6%	42.2%	39.8%	45.6%
18 to 19	325	328	288	250	17.1%	17.9%	18.4%	17.6%
20 to 21	167	164	166	113	8.8%	8.9%	10.6%	7.9%
22 to 24	139	114	122	95	7.3%	6.2%	7.8%	6.7%
25 to 29	157	161	113	97	8.3%	8.8%	7.2%	6.8%
30 to 44	244	226	189	155	12.9%	12.3%	12.1%	10.9%
45 to 64	69	61	53	59	3.6%	3.3%	3.4%	4.1%
65 & Over	6	8	8	5	0.3%	0.4%	0.5%	0.4%
Age Unknown	0	0	0	0	0.0%	0.0%	0.0%	0.0%
Headcount by Gender								
Male	747	763	627	528	39.4%	41.6%	40.2%	37.1%
Female	1,149	1,073	934	895	60.6%	58.4%	59.8%	62.9%
Headcount by Ethnicity**								
African American	1,072	1,040	888	790	56.5%	56.6%	56.9%	55.5%
White American	671	623	506	503	35.4%	33.9%	32.4%	35.3%
Other Ethnicity	153	173	167	130	8.1%	9.4%	10.7%	9.1%

*NOTE: A "full-time" undergraduate student load is 12 or more semester credits.

**NOTE: "Other" includes students reported as American Indian/Alaskan Native, Asian American, Hispanic American, Hawaiian Native/Pacific Islander, those reporting two or more races, International and those whose ethnicity is unknown.

Data Sources: Mid-South Student Enrollment; Arkansas State University Mid-South

Information Source: The Office of Institutional Effectiveness; web address: www.AState.edu/rp; email address: asuip@AState.edu

Geographic Origin of Total Enrollment

Jonesboro Campus - Fall 2018

Arkansas Counties

Arkansas+	90	Lee+	29
Ashley	33	Lincoln	23
Baxter+	208	Little River	9
Benton	146	Logan	14
Boone	45	Lonoke	394
Bradley	15	Madison	8
Calhoun	6	Marion	37
Carroll	15	Miller	23
Chicot	3	Mississippi+	381
Clark	13	Monroe+	35
Clay+	212	Montgomery	4
Cleburne+	84	Nevada	2
Cleveland	8	Newton	4
Columbia	8	Ouachita	13
Conway	24	Perry	11
Craighead+	2,202	Phillips+	83
Crawford	42	Pike	5
Crittenden+	377	Poinsett+	314
Cross+	198	Polk	17
Dallas	6	Pope	44
Desha	31	Prairie+	49
Drew	37	Pulaski	680
Faulkner	156	Randolph+	162
Franklin	10	Saline	330
Fulton+	78	Scott	8
Garland	126	Searcy	8
Grant	48	Sebastian	69
Greene+	1,047	Sevier	8
Hempstead	10	Sharp+	108
Hot Spring	46	St. Francis+	132
Howard	16	Stone+	41
Independence+	224	Union	24
Izard+	76	Van Buren	21
Jackson+	123	Washington	95
Jefferson	132	White+	407
Johnson	11	Woodruff+	43
Lafayette	2	Yell	11
Lawrence+	160	Total	9,714

Other U.S. States/Territories

Missouri	872	New Mexico	15
Tennessee	542	Minnesota	14
Mississippi	536	Washington	13
Texas	159	Kentucky	12
California	104	Oregon	11
South Carolina	104	Wisconsin	11
Florida	98	Idaho	9
Louisiana	83	Massachusetts	9
Illinois	78	Iowa	8
Georgia	77	Nevada	8
Oklahoma	61	Nebraska	7
Michigan	57	Wyoming	6
Alabama	52	Montana	5
Kansas	51	Alaska	4
Ohio	48	Delaware	4
Virginia	38	Rhode Island	4
Pennsylvania	35	West Virginia	4
Colorado	31	Maine	3
North Carolina	29	South Dakota	3
New Jersey	28	Vermont	3
New York	26	Dist. of Columbia	2
Arizona	22	New Hampshire	2
Connecticut	20	North Dakota	2
Utah	19	Virgin Islands	2
Maryland	17	Hawaii	1
Indiana	16	Total	3,365

International

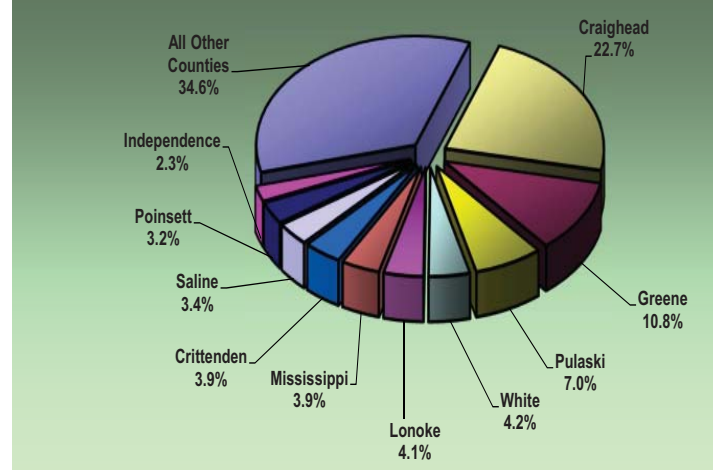
Foreign Countries	630
-------------------	-----

Grand Total

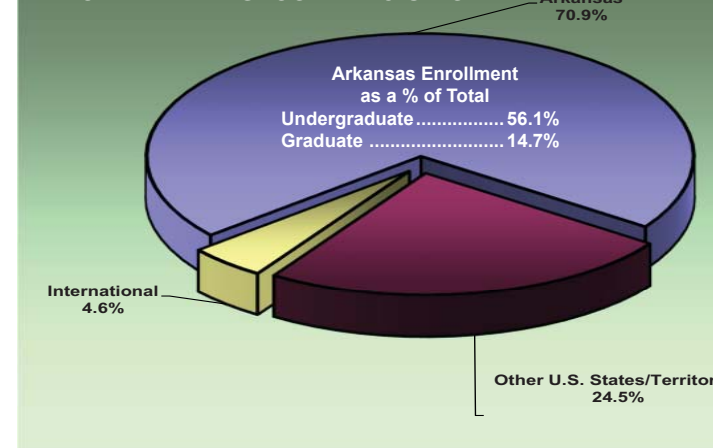
Grand Total	13,709
--------------------	---------------

+ These counties have been historically identified as being in A-State's "Draw Area". The Arkansas Department of Higher Education defines an institution's "Draw Area" as those counties in which at least 3% of the county's high school graduates from the most recent graduating class enrolled in that institution.

TOP ARKANSAS COUNTIES BY ENROLLMENT



ENROLLMENT BY GEOGRAPHIC ORIGIN



*NOTE: Counties that are within a 75 mile radius of A-State.

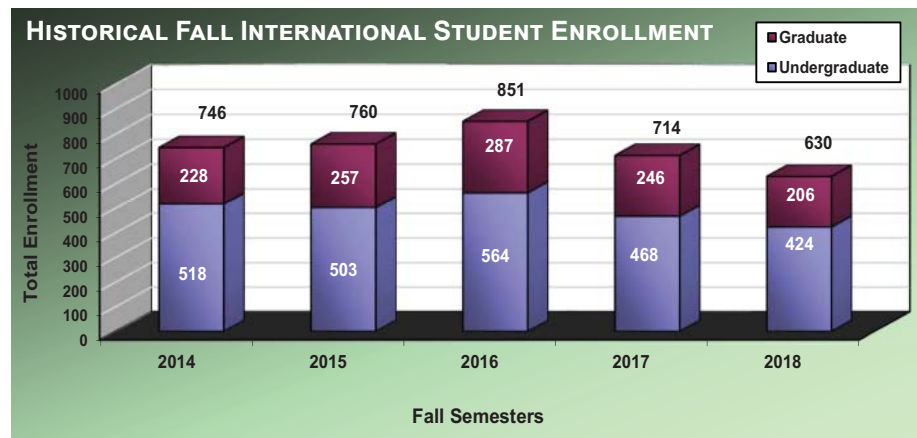
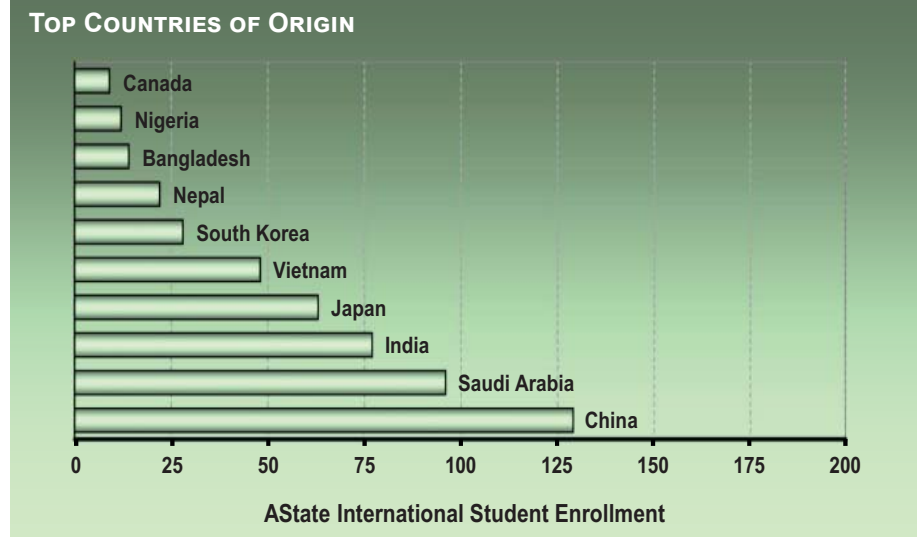
Data Source: Student Enrollment Information

Information Source: The Office of Institutional Effectiveness; web address: www.AState.edu/irp; email address: asuip@AState.edu

Geographic Origin of International Students

Jonesboro Campus - Fall 2018

Country of Origin			
Undergraduate		Graduate	
Argentina	0	2	
Australia	3	0	
Bahamas	2	1	
Bangladesh	2	12	
Barbados	1	0	
Belgium	1	0	
Brazil	0	1	
Canada	8	1	
China	97	32	
Columbia	1	0	
Congo, The DRC	1	0	
Costa Rica	0	3	
Czech Republic	1	0	
Denmark	0	1	
Egypt	7	1	
Equatorial Guinea	1	0	
Finland	2	0	
France	4	1	
Germany	2	0	
Ghana	2	2	
Grenada	0	1	
India	17	60	
Iran	0	1	
Ireland	0	1	
Israel	0	1	
Ivory Coast	1	0	
Japan	59	4	
Jordan	1	1	
Kazakhstan	1	0	
Kuwait	5	0	
Latvia	1	0	
Lebanon	1	0	
Liberia	1	0	
Malaysia	2	0	
Mali	1	0	
Mexico	4	5	
Morocco	4	1	
Nepal	5	17	
Netherlands-Antilles	1	0	
New Zealand	1	2	
Nigeria	7	5	
Oman	1	0	
Pakistan	5	2	
Palestinian Territory	3	0	
Philippines	0	2	
Russia	1	2	
Saudi Arabia	77	19	
Slovenia	2	0	
South Africa	6	2	
South Korea	25	3	
Spain	2	1	
Sri Lanka	3	2	
Sudan	1	0	
Sweden	1	1	
Syria	1	1	
Taiwan	1	0	
Tanzania	1	1	
Thailand	1	2	
Turkey	2	0	
United Kingdom	4	1	
Vietnam	37	11	
Zimbabwe	3	0	
Total	424	206	



Data Source: Student Enrollment Information
 Information Source: The Office of Institutional Effectiveness: web address: www.AState.edu/irp; email address: asuipr@AState.edu

Enrollment & SCH by Legal Residence

Jonesboro Campus - Fall 2014 to Fall 2018

Total On- & Off-Campus Enrollment by Residency Status*										
	Fall Semesters					Percentage of Total Enrollment				
	2014	2015	2016	2017	2018	2014	2015	2016	2017	2018
Total Headcount Enrollment	13,144	13,410	14,085	13,930	13,709					
Undergraduate Full-Time										
Resident	6,287	6,138	6,026	5,614	5,494	47.8%	45.8%	42.8%	40.3%	40.1%
Nonresident	1,178	1,157	1,279	1,280	1,295	9.0%	8.6%	9.1%	9.2%	9.4%
Undergraduate Part-Time										
Resident	2,139	2,014	2,229	2,421	2,227	16.3%	15.0%	15.8%	17.4%	16.2%
Nonresident	253	283	305	289	334	1.9%	2.1%	2.2%	2.1%	2.4%
Graduate Full-Time										
Resident	356	415	428	402	398	2.7%	3.1%	3.0%	2.9%	2.9%
Nonresident	305	321	328	301	269	2.3%	2.4%	2.3%	2.2%	2.0%
Graduate Part-Time										
Resident	1,446	1,656	1,794	1,734	1,661	11.0%	12.3%	12.7%	12.4%	12.1%
Nonresident	1,180	1,426	1,696	1,889	2,031	9.0%	10.6%	12.0%	13.6%	14.8%

Total On- & Off-Campus Semester Credit Hours (SCH)										
	Fall Semesters					Percentage of Total SCH				
	2014	2015	2016	2017	2018	2014	2015	2016	2017	2018
Total SCH	142,804	142,784	146,065	141,105	139,250					
Undergraduate Full-Time										
Resident	91,391	90,031	88,578	82,933	81,534	64.0%	63.1%	60.6%	58.8%	58.6%
Nonresident	16,495	16,240	17,997	18,160	18,683	11.6%	11.4%	12.3%	12.9%	13.4%
Undergraduate Part-Time										
Resident	14,459	13,694	14,651	15,497	14,072	10.1%	9.6%	10.0%	11.0%	10.1%
Nonresident	2,049	2,242	2,303	2,163	2,434	1.4%	1.6%	1.6%	1.5%	1.7%
Graduate Full-Time										
Resident	4,229	5,094	5,273	4,879	4,842	3.0%	3.6%	3.6%	3.5%	3.5%
Nonresident	3,234	3,348	3,528	3,182	2,802	2.3%	2.3%	2.4%	2.3%	2.0%
Graduate Part-Time										
Resident	6,260	6,738	7,255	6,991	6,979	4.4%	4.7%	5.0%	5.0%	5.0%
Nonresident	4,687	5,397	6,480	7,300	7,904	3.3%	3.8%	4.4%	5.2%	5.7%

*NOTE: Student residency is established for tuition assessment. A student may qualify as an Arkansas resident if he or she maintains an independent permanent residence within Arkansas for a minimum of 6 months and makes formal application to the University to establish residency.

Data Source: Student Enrollment Information

Information Source: The Office of Institutional Effectiveness; web address: www.AState.edu/irp; email address: asuipr@AState.edu

Enrollment by College & Department

Jonesboro Campus - Fall 2018

College/Department/Program	Enrollment		Total
	Undergraduate	Graduate	
COLLEGE OF AGRICULTURE			
Agriculture	400	27	427
Technology	41	0	41
Total Agriculture Enrollment	441	27	468
COLLEGE OF BUSINESS			
Accounting	226	16	242
Computer & Information Technology	104	0	104
Economics & Finance	513	205	718
Management & Marketing	373	0	373
Total Business Enrollment	1,216	221	1,437
COLLEGE OF EDUCATION & BEHAVIORAL SCIENCE			
Health, Physical Education & Sport Sciences	419	280	699
Psychology & Counseling	286	155	441
School of Teacher Education & Leadership	411	2,512	2,923
Total Education & Behavioral Enrollment	1,116	2,947	4,063
COLLEGE OF ENGINEERING & COMPUTER SCIENCE			
Computer Science	185	69	254
Engineering	333	39	372
Total Engineering & Computer Sci. Enrollment	518	108	626
COLLEGE OF LIBERAL ARTS & COMMUNICATION			
Art + Design	163	0	163
Communication	204	22	226
Criminology, Sociology & Geography	338	21	359
English & Philosophy	141	26	167
History	121	15	136
Media	162	52	214
Music	137	12	149
Political Science	88	212	300
Theatre	44	0	44
World Languages & Cultures	16	0	16
Heritage Studies Program	0	40	40
Total Liberal Arts & Comm. Enrollment	1,414	400	1,814

College/Department/Program	Enrollment		Total
	Undergraduate	Graduate	
COLLEGE OF NURSING & HEALTH PROFESSIONS			
Clinical Laboratory Sciences	78	0	78
Communication Disorders	124	53	177
Medical Imaging & Radiation Sciences	220	0	220
Physical Therapy	75	86	161
School of Nursing	1,115	189	1,304
Social Work	159	73	232
Athletic Training Program	0	8	8
Dietetics Program	30	0	30
Disaster Preparedness Program	60	30	90
Occupational Therapy Program	68	88	156
Total Nursing & Health Prof. Enrollment	1,929	527	2,456
COLLEGE OF SCIENCES & MATHEMATICS			
Biological Sciences	593	32	625
Chemistry & Physics	90	3	93
Mathematics & Statistics	67	10	77
Environmental Sciences Program	0	23	23
Molecular Biosciences Program	0	15	15
Total Sciences & Math. Enrollment	750	83	833
UNDERGRADUATE STUDIES	1,966	0	1,966
UNDECLARED GRADUATES	0	46	46
TOTAL ENROLLMENT	9,350	4,359	13,709

Data Source: Student Enrollment Information
 Information Source: The Office of Institutional Effectiveness: web address: www.AState.edu/irp; email address: asuirp@astate.edu

Undergraduate Enrollment by Degree Program

Jonesboro Campus - Fall 2018

Associate Degree Programs

COLLEGE OF AGRICULTURE

AS Technology 2

COLLEGE OF BUSINESS

AS Accounting 4
AS Computer & Information
Technology 1

COLLEGE OF LIBERAL ARTS & COMM.

AAS Crime Scene Investigation 2
AAS Law Enforcement 1

COLLEGE OF NURSING & HEALTH PROF.

AASN Nursing 231
AAS Physical Therapist Assistant 75
AAS Occupational Therapy
Assistant 68
AAS Disaster Preparedness &
Emergency Management 15
AAS Clinical Laboratory Science 8
AAS Paramedic 4

UNDERGRADUATE STUDIES

AGS General Studies 14

Largest Degree Programs by Enrollment

BSN Nursing 783
EDS Educational Leadership 646
MSE Educational Leadership 591
BS Biological Sciences 486
BGS General Studies 397

Bachelor's Degree Programs

COLLEGE OF AGRICULTURE

BSA Agricultural Business 162
BSA Plant Science 92
BSA Animal Science 91
BS Technology 39
BSA Agricultural Studies 36
BAS Applied Science 19

COLLEGE OF BUSINESS

BS Business Administration 297
BS Accounting 222
BS Management 184
BS Finance 171
BS Marketing 122
BS Computer & Info. Technology 94
BS International Business 38
BA Economics 29
BS Global Supply Chain
Management 29
BS Business Economics 16
BSE Business Technology
Education 9

COLLEGE OF EDUC. & BEHAVIORAL SCI.

BSE Elementary Education 299
BS Psychology 286
BS Exercise Science 251
BSE Middle Level Education 84
BSE Physical Education 77
BS Sport Management 81
BSE Special Education, K-12 28
BS Health Promotion 10

COLLEGE OF ENGINEERING & COMPUTER SCIENCE

BSME Mechanical Engineering 156
BS Computer Science 139
BSCE Civil Engineering 102
BSEE Electrical Engineering 75
BA Computer Science 46

COLLEGE OF LIBERAL ARTS & COMM.

BA Criminology 213
BA Sociology 122
BS Creative Media Production 110
BS Strategic Communications 108
BFA Graphic Design 98
BA Communication Studies 90
BA Political Science 88
BME Instrumental Music Educ. 76
BSE Social Science Education 68
BA English 66
BSE English Education 65
BFA Art 61
BA History 53
BS Multimedia Journalism 51
BA Theatre 44
BM Music Performance 28
BME Vocal Music Education 17
BA Music 16
BA World Languages & Cultures 13
BA Philosophy 10
BA Art 4
BS Digital Innovations 4
BSE World Languages & Cultures
Education 3
BS Journalism 1

COLLEGE OF NURSING & HEALTH PROF.

BSN Nursing 783
BSRS Radiologic Sciences 220
BSW Social Work 159
BS Communication Disorders 124
BS Health Studies 101
BS Clinical Laboratory Science 70
BS Disaster Preparedness &
Emergency Management 41
BS Dietetics 30

COLLEGE OF SCIENCES & MATHEMATICS

BS Biological Sciences 486
BS Wildlife Fisheries & Conservation 63
BA Chemistry 46
BSE Mathematics Education 35
BS Mathematics 32
BS Chemistry 30
BS Biotechnology 20
BS Environmental Studies 16
BS Physics 9
BSE Biology Education 6
BSE Chemistry Education 5
BA Environmental Studies 2

UNDERGRADUATE STUDIES

NDS Undeclared 1,486
BGS General Studies 397
BS Interdisciplinary Studies 67
BS Organizational Supervision 2

TOTAL UNDERGRADUATES 9,350

Graduate Enrollment by Degree Program

Jonesboro Campus - Fall 2018

Graduate Certificate Programs

COLLEGE OF EDUCATION & BEHAVIORAL SCIENCE

GCert	Special Education Teacher	13
GCert	Building Level Admin.	10
GCert	Gifted, Talented & Creative Teacher	9
GCert	Curriculum Director	4
GCert	Superintendent	2
GCert	Special Education Director	1

Master's Degree Programs

COLLEGE OF AGRICULTURE

MSA	Agriculture	27
-----	-------------	----

COLLEGE OF BUSINESS

MBA	Business Administration	205
MACC	Accounting	16

COLLEGE OF EDUCATION & BEHAVIORAL SCIENCE

MSE	Educational Leadership	591
MSE	Reading Education	285
MSE	Special Education, K-12	266
MS	Sport Administration	258
MSE	Educational Theory & Practice	165
MSE	Special Ed., Gifted, Talented & Creative	153
MS	College Student Personnel Services	101
MSE	Curriculum & Instruction	101
MS	Early Childhood Services	87
MSE	Early Childhood Education	51
MAT	Teaching	40
MS	Exercise Science	20
MS	Psychological Science	10
MSE	Physical Education	2

COLLEGE OF ENGINEERING & COMPUTER SCIENCE

MS	Computer Science	68
MEM	Engineering Management	28
MSEngr	Engineering	11
MSE	Computer Science Education	1

COLLEGE OF LIBERAL ARTS & COMM.

MPA	Public Administration	207
MS	Media Management	36
MA	English	24
MA	Communication Studies	22
MA	Sociology	13
MA	History	12
MM	Music Performance	10
MSMC	Radio-Television	9
MA	Criminal Justice	8
MSMC	Journalism	7
MA	Political Science	5
MSE	Social Science Education	3
MME	Music Education	2
MSE	English Education	2

COLLEGE OF NURSING & HEALTH PROFESSIONS

MSN	Nursing	109
MSW	Social Work	73
MSN	Nurse Anesthesia	61
MCD	Communication Disorders	53
MS	Disaster Preparedness & Emergency Management	30
M.AT	Athletic Training	8
MS	Health Sciences	5

COLLEGE OF SCIENCES & MATHEMATICS

MS	Biology	23
MS	Mathematics	9
MS	Environmental Science	7
MA	Biological Sciences	5

COLLEGE OF SCIENCES & MATHEMATICS (CONT.)

MS	Molecular Biosciences	5
PSM	Biotechnology	4
MS	Chemistry	3
MSE	Mathematics Education	1

Specialist Degree Programs

COLLEGE OF EDUCATION & BEHAVIORAL SCIENCE

EDS	Educational Leadership	646
EDS	Psychology & Counseling	44
EDS	Reading Education	22
SCCT	Community College Admin. Ed.	1

Doctoral Degree Programs

COLLEGE OF EDUCATION & BEHAVIORAL SCIENCE

EDD	Educational Leadership	62
-----	------------------------	----

COLLEGE OF LIBERAL ARTS & COMMUNICATION

PHD	Heritage Studies	40
-----	------------------	----

COLLEGE OF NURSING & HEALTH PROFESSIONS

DOT	Occupational Therapy	88
DPT	Physical Therapy	86
DNP	Nursing Practice	14

COLLEGE OF SCIENCES & MATHEMATICS

PHD	Environmental Science	16
PHD	Molecular Biosciences	10

UNDECLARED GRADUATES

NDS	Undeclared/Certification	49
-----	--------------------------	----

TOTAL GRADUATES 4,359

Enrollment - by College & Career

Jonesboro Campus - Fall 2014 to Fall 2018

	Total Enrollment									
	Fall Semesters					Percentage of Total Enrollment				
	2014	2015	2016	2017	2018	2014	2015	2016	2017	2018
Agriculture Headcount	488	506	530	499	468	3.7%	3.8%	3.8%	3.6%	3.4%
Undergraduate	450	465	487	456	441	3.4%	3.5%	3.5%	3.3%	3.2%
Graduate	38	41	43	43	27	0.3%	0.3%	0.3%	0.3%	0.2%
Business Headcount	1,577	1,539	1,497	1,458	1,437	12.0%	11.5%	10.6%	10.5%	10.5%
Undergraduate	1,378	1,352	1,317	1,239	1,216	10.5%	10.1%	9.4%	8.9%	8.9%
Graduate	199	187	180	219	221	1.5%	1.4%	1.3%	1.6%	1.6%
Education & Behavioral Sci. Headcount	3,525	3,813	4,040	4,096	4,063	26.8%	28.4%	28.7%	29.4%	29.6%
Undergraduate	1,496	1,356	1,239	1,187	1,116	11.4%	10.1%	8.8%	8.5%	8.1%
Graduate	2,029	2,457	2,801	2,909	2,947	15.4%	18.3%	19.9%	20.9%	21.5%
Engineering & Computer Sci. Headcount	581	675	744	635	626	4.4%	5.0%	5.3%	4.6%	4.6%
Undergraduate	499	543	577	517	518	3.8%	4.0%	4.1%	3.7%	3.8%
Graduate	82	132	167	118	108	0.6%	1.0%	1.2%	0.8%	0.8%
Liberal Arts & Comm. Headcount	1,771	1,693	1,875	1,845	1,814	13.5%	12.6%	13.3%	13.2%	13.2%
Undergraduate	1,404	1,327	1,470	1,448	1,414	10.7%	9.9%	10.4%	10.4%	10.3%
Graduate	367	366	405	397	400	2.8%	2.7%	2.9%	2.8%	2.9%
Nursing & Health Prof. Headcount	2,100	2,229	2,310	2,471	2,456	16.0%	16.6%	16.4%	17.7%	17.9%
Undergraduate	1,656	1,741	1,789	1,953	1,929	12.6%	13.0%	12.7%	14.0%	14.1%
Graduate	444	488	521	518	527	3.4%	3.6%	3.7%	3.7%	3.8%
Sciences & Mathematics Headcount	887	894	930	844	833	6.7%	6.7%	6.6%	6.1%	6.1%
Undergraduate	794	783	831	756	750	6.0%	5.8%	5.9%	5.4%	5.5%
Graduate	93	111	99	88	83	0.7%	0.8%	0.7%	0.6%	0.6%
Total Headcount	13,144	13,410	14,085	13,930	13,709					

Semester Credit Hour Production - by College & Career

Jonesboro Campus - Fiscal Year 2013-2014 to Fiscal Year 2017-2018

	Total Semester Credit Hours (SCH)									
	Fiscal Years					Percentage* of Total SCH				
	2013/14	2014/15	2015/16	2016/17	2017/18	2013/14	2014/15	2015/16	2016/17	2017/18
Agriculture, Engineering & Tech. SCH	13,051	14,905	16,251	16,623	15,488	3.8%	4.3%	4.6%	4.6%	4.3%
Undergraduate	12,351	13,639	14,722	15,188	14,350	3.6%	4.0%	4.2%	4.2%	4.0%
Graduate	700	1,266	1,529	1,435	1,138	0.2%	0.4%	0.4%	0.4%	0.3%
Business SCH	34,720	35,299	35,903	35,043	34,937	10.0%	10.3%	10.2%	9.6%	9.7%
Undergraduate	31,004	32,186	32,510	31,705	31,432	8.9%	9.4%	9.2%	8.7%	8.7%
Graduate	3,716	3,113	3,393	3,338	3,505	1.1%	0.9%	1.0%	0.9%	1.0%
Education & Behavioral Sci. SCH	96,788	93,472	97,192	101,566	104,116	27.9%	27.2%	27.6%	27.9%	28.9%
Undergraduate	48,001	44,237	38,941	35,692	35,290	13.8%	12.9%	11.1%	9.8%	9.8%
Graduate	48,787	49,235	58,251	65,874	68,826	14.0%	14.4%	16.6%	18.1%	19.1%
Liberal Arts & Communication SCH	96,270	90,205	88,753	92,876	90,556	27.7%	26.3%	25.2%	25.5%	25.2%
Undergraduate	90,264	83,855	82,190	85,179	81,805	26.0%	24.4%	23.4%	23.4%	22.7%
Graduate	6,006	6,350	6,563	7,697	8,751	1.7%	1.9%	1.9%	2.1%	2.4%
Nursing & Health Professions SCH	44,123	46,140	49,424	54,106	56,257	12.7%	13.4%	14.1%	14.9%	15.6%
Undergraduate	32,287	33,974	36,113	39,757	41,171	9.3%	9.9%	10.3%	10.9%	11.4%
Graduate	11,836	12,166	13,311	14,349	15,086	3.4%	3.5%	3.8%	3.9%	4.2%
Sciences & Mathematics SCH	52,733	53,385	53,675	51,711	48,507	15.2%	15.6%	15.3%	14.2%	13.5%
Undergraduate	50,517	50,762	50,300	48,609	45,966	14.5%	14.8%	14.3%	13.4%	12.8%
Graduate	2,216	2,623	3,375	3,102	2,541	0.6%	0.8%	1.0%	0.9%	0.7%
Total SCH	347,336	343,087	351,771	363,884	359,798					

*Note: There may be rounding in percentages.

Data Source: Student Enrollment Information

Information Source: The Office of Institutional Effectiveness: web address: www.AState.edu/irp; email address: asuirp@AState.edu

Full-Time Equivalent Enrollment (FTE)

Jonesboro Campus - Fiscal Year 2017-2018

College/Department/Program	FTE Enrollment		
	Undergraduate	Graduate	Total
COLLEGE OF AGRICULTURE, ENGINEERING & TECHNOLOGY			
Agriculture	255.6	25.7	281.3
Engineering	172.8	21.7	194.5
Technology	49.9	0.0	49.9
Total Agri., Engineering & Tech. FTE	478.3	47.4	525.8
COLLEGE OF BUSINESS			
Accounting	173.5	30.8	204.3
Computer & Information Technology	183.1	29.5	212.6
Economics & Finance	334.9	32.5	367.4
Management & Marketing	356.2	53.3	409.5
Total Business FTE	1,047.7	146.0	1,193.8
COLLEGE OF EDUCATION & BEHAVIORAL SCIENCE			
Health, Physical Education & Sport Sci	510.7	247.0	757.7
Psychology & Counseling	325.1	49.0	374.1
School of Teacher Education & Leadership	340.6	2,571.8	2,912.3
Total Education & Behavioral Sci. FTE	1,176.3	2,867.8	4,044.1
COLLEGE OF LIBERAL ARTS & COMMUNICATION			
Art + Design	194.1	0.0	194.1
Communication	291.9	19.9	311.8
Criminology, Sociology & Geography	549.8	9.8	559.6
English & Philosophy	606.2	15.8	622.0
History	329.0	12.1	341.1
Media	139.8	31.2	171.0
Music	219.2	9.4	228.6
Political Science	164.5	245.0	409.5
Theatre	90.7	0.0	90.7
World Languages & Cultures	141.7	0.0	141.7
Heritage Studies Program	0.0	21.5	21.5
Total Liberal Arts & Comm. FTE	2,726.8	364.6	3,091.5

College/Department/Program	FTE Enrollment		
	Undergraduate	Graduate	Total
COLLEGE OF NURSING & HEALTH PROFESSIONS			
Clinical Laboratory Sciences	41.0	0.0	41.0
Communication Disorders	94.2	54.5	148.7
Health Professions	132.6	7.6	140.3
Medical Imaging & Radiation Sciences	121.1	0.0	121.1
Occupational Therapy	34.7	132.8	167.4
Physical Therapy	66.0	119.6	185.6
School of Nursing	572.0	198.5	770.5
Social Work	116.4	83.6	200.0
Dietetics Program	53.0	0.0	53.0
Disaster Preparedness Program	141.4	32.0	173.4
Total Nursing & Health Professions FTE	1,372.4	628.6	2,001.0
COLLEGE OF SCIENCES & MATHEMATICS			
Biological Sciences	570.8	25.8	596.5
Chemistry & Physics	412.0	2.0	414.0
Computer Science	89.3	51.0	140.3
Mathematics & Statistics	460.1	10.0	470.1
Environmental Sciences Program	0.0	7.8	7.8
Molecular Biosciences Program	0.0	9.2	9.2
Total Sciences & Mathematics FTE	1,532.2	105.9	1,638.1
UNDERGRADUATE STUDIES	294.5	0.0	294.5

Full-Time Equivalent Enrollment (FTE) for the fiscal year is calculated by dividing undergraduate semester credit hours (SCH) by thirty and graduate SCH by twenty-four. (Figures have been rounded.)

Semester Credit Hour Production (SCH)

Jonesboro Campus - Fiscal Year 2017-2018

College/Department/Program	SCH Production		Total
	Undergraduate	Graduate	
COLLEGE OF AGRICULTURE, ENGINEERING & TECHNOLOGY			
Agriculture	7,668	617	8,285
Engineering	5,185	521	5,706
Technology	1,497	0	1,497
Total Agri., Engineering & Tech. SCH.....	14,350	1,138	15,488
COLLEGE OF BUSINESS			
Accounting	5,205	739	5,944
Computer & Information Technology	5,493	709	6,202
Economics & Finance	10,048	779	10,827
Management & Marketing	10,686	1,278	11,964
Total Business SCH	31,432	3,505	34,937
COLLEGE OF EDUCATION & BEHAVIORAL SCIENCE			
Health, Physical Education & Sport Sci	15,320	5,929	21,249
Psychology & Counseling	9,753	1,175	10,928
School of Teacher Education & Leadership	10,217	61,722	71,939
Total Education & Behavioral Sci. SCH.....	35,290	68,826	104,116
COLLEGE OF LIBERAL ARTS & COMMUNICATION			
Art + Design	5,822	0	5,822
Communication	8,756	478	9,234
Criminology, Sociology & Geography.....	16,494	234	16,728
English & Philosophy	18,186	379	18,565
History	9,870	291	10,161
Media	4,194	749	4,943
Music.....	6,577	225	6,802
Political Science	4,935	5,880	10,815
Theatre.....	2,720	0	2,720
World Languages & Cultures	4,251	0	4,251
Heritage Studies Program.....	0	515	515
Total Liberal Arts & Comm. SCH.....	81,805	8,751	90,556

College/Department/Program	SCH Production		Total
	Undergraduate	Graduate	
COLLEGE OF NURSING & HEALTH PROFESSIONS			
Clinical Laboratory Sciences.....	1,230	0	1,230
Communication Disorders.....	2,827	1,307	4,134
Health Professions	3,979	183	4,162
Medical Imaging & Radiation Sciences.....	3,632	0	3,632
Occupational Therapy	1,040	3,186	4,226
Physical Therapy.....	1,980	2,871	4,851
School of Nursing.....	17,160	4,764	21,924
Social Work	3,492	2,006	5,498
Dietetics Program.....	1,590	0	1,590
Disaster Preparedness Program.....	4,241	769	5,010
Total Nursing & Health Professions SCH.....	41,171	15,086	56,257
COLLEGE OF SCIENCES & MATHEMATICS			
Biological Sciences	17,123	618	17,741
Chemistry & Physics	12,360	49	12,409
Computer Science.....	2,679	1,225	3,904
Mathematics & Statistics	13,804	240	14,044
Environmental Sciences Program.....	0	188	188
Molecular Biosciences Program.....	0	221	221
Total Sciences & Mathematics SCH.....	45,966	2,541	48,507
UNDERGRADUATE STUDIES	8,836	0	8,836

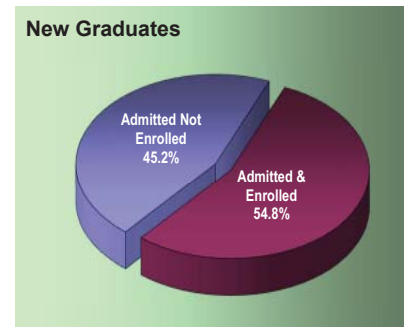
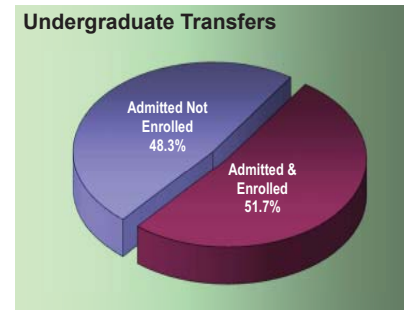
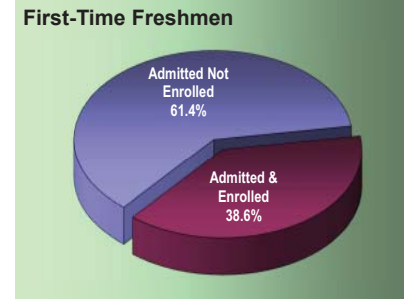
Semester credit hour (SCH) is a unit of measure that represents one student engaged in an instructional activity for a semester for which one credit hour is granted upon successful completion of the activity.

New Student Applications

Jonesboro Campus - Fall 2018

		First-Time Freshmen	Undergraduate Transfers	New Graduates	Percent of Total Applicants by Characteristic		
					First-Time Freshmen	Undergraduate Transfers	New Graduates
From Arkansas							
	Applied	3,794	1,613	1,623			
	Admitted	3,065	1,155	1,076	80.8%	71.6%	66.3%
	Enrolled	1,250	629	604	32.9%	39.0%	37.2%
From Out-of-State							
	Applied	1,203	589	2,471			
	Admitted	820	354	1,322	68.2%	60.1%	53.5%
	Enrolled	265	154	775	22.0%	26.1%	31.4%
International							
	Applied	256	74	523			
	Admitted	171	40	214	66.8%	54.1%	40.9%
	Enrolled	50	18	52	19.5%	24.3%	9.9%
Male							
	Applied	2,189	751	1,694			
	Admitted	1,664	509	909	76.0%	67.8%	53.7%
	Enrolled	670	298	444	30.6%	39.7%	26.2%
Female							
	Applied	3,064	1,525	2,923			
	Admitted	2,392	1,040	1,703	78.1%	68.2%	58.3%
	Enrolled	895	503	987	29.2%	33.0%	33.8%
Black, Non-Hispanic							
	Applied	935	467	736			
	Admitted	499	285	417	53.4%	61.0%	56.7%
	Enrolled	161	127	172	17.2%	27.2%	23.4%
White, Non-Hispanic							
	Applied	3,490	1,539	2,912			
	Admitted	2,965	1,104	1,772	85.0%	71.7%	60.9%
	Enrolled	1,206	601	1,082	34.6%	39.1%	37.2%
Other Ethnicity*							
	Applied	828	270	969			
	Admitted	592	160	423	71.5%	59.3%	43.7%
	Enrolled	198	73	177	23.9%	27.0%	18.3%

First-Time Admitted Applicants by Enrollment Status



*NOTE: "Other" includes students reported as American Indian/Alaskan Native, Asian American, Hispanic American, Hawaiian Native/Pacific Islander, those reporting two or more races, International and those whose ethnicity is unknown.
 Data Sources: Application, Acceptance and Enrollment Information
 Information Source: The Office of Institutional Effectiveness: web address: www.AState.edu/irp; email address: asuip@AState.edu

First-Time Freshmen

Jonesboro Campus - Fall 2014 to Fall 2018

Total First-Time Freshmen Enrollment										
	Fall Semesters					Percentage of First-Time Freshmen Total				
	2014	2015	2016	2017	2018	2014	2015	2016	2017	2018
Total First-Time Freshmen	1,698	1,577	1,644	1,427	1,565					
Full-Time*	1,681	1,542	1,609	1,405	1,525	99.0%	97.8%	97.9%	98.5%	97.4%
Part-Time	17	35	35	22	40	1.0%	2.2%	2.1%	1.5%	2.6%
Avg. Hours Enrolled per Semester	14.6	14.6	14.5	14.9	14.8					
Full-Time	14.7	14.8	14.7	15.0	15.0					
Part-Time	6.9	8.3	6.6	6.1	8.0					

First-Time Freshmen Student Demographics										
	Fall Semesters					Percentage of First-Time Freshmen Total				
	2014	2015	2016	2017	2018	2014	2015	2016	2017	2018
Average Age of First-Time Freshmen	18.3	18.3	18.3	18.2	18.2					
Headcount by Gender										
Male	774	727	755	573	670	45.6%	46.1%	45.9%	40.2%	42.8%
Female	924	850	889	854	895	54.4%	53.9%	54.1%	59.8%	57.2%
Headcount by Ethnicity										
African American	180	164	187	131	161	10.6%	10.4%	11.4%	9.2%	10.3%
American Indian/Alaskan Native	9	2	7	4	2	0.5%	0.1%	0.4%	0.3%	0.1%
Asian American	12	13	14	8	15	0.7%	0.8%	0.9%	0.6%	1.0%
Hispanic American	50	46	56	48	71	2.9%	2.9%	3.4%	3.4%	4.5%
Native Hawaiian/Pacific Islander	5	0	0	0	0	0.3%	0.0%	0.0%	0.0%	0.0%
Two or More Races	41	37	37	41	46	2.4%	2.3%	2.3%	2.9%	2.9%
White American	1,334	1,223	1,208	1,152	1,206	78.6%	77.6%	73.5%	80.7%	77.1%
Ethnicity Unknown	5	3	11	10	14	0.3%	0.2%	0.7%	0.7%	0.9%
International	62	89	124	33	50	3.7%	5.6%	7.5%	2.3%	3.2%

*NOTE: A "full-time" undergraduate student load is 12 or more semester credits.
 Data Sources: Student Enrollment Information
 Information Source: The Office of Institutional Effectiveness; web address: www.AState.edu/irp; email address: asuipr@AState.edu

Academic Preparation - Admission Test Scores

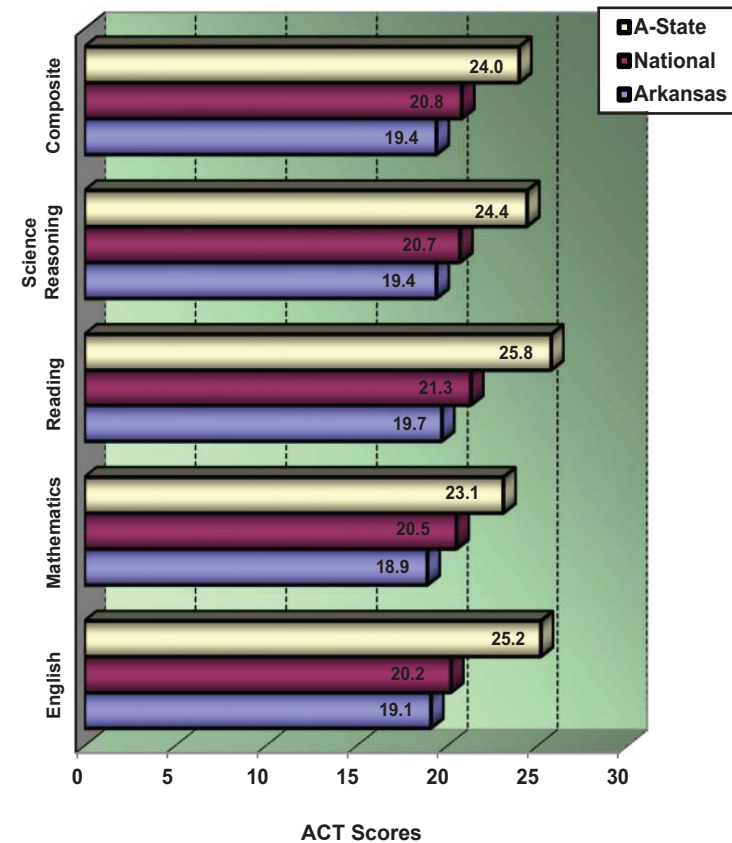
Jonesboro Campus

24.0 Average ACT Composite Score for Jonesboro Campus - Fall 2018

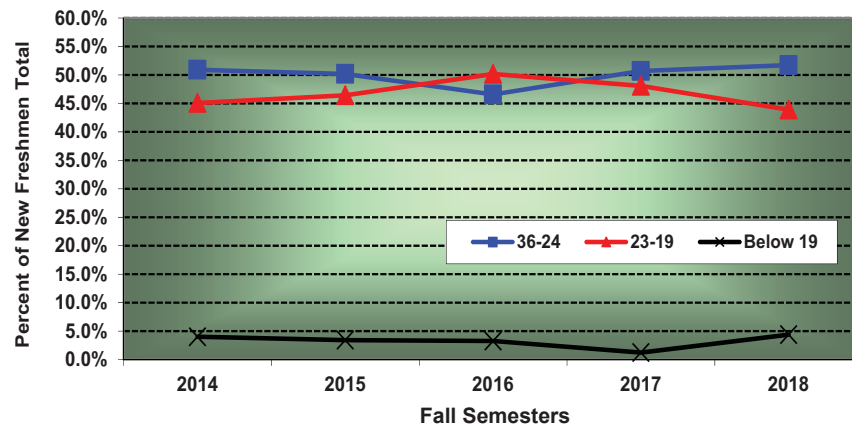
HISTORICAL COMPOSITE ACT SCORE DISTRIBUTION FOR FIRST-TIME FRESHMEN
Fall Semesters

Composite Score	Fall Semesters				
	2014	2015	2016	2017	2018
30-36	128	95	112	112	125
24-29	684	640	587	588	642
19-23	719	680	753	664	651
Below 19	64	50	49	17	65
Other Test Scores	103	112	143	46	82
Average High School GPA	3.47	3.51	3.48	3.56	3.55

A-STATE ACT AVERAGES VS. NATIONAL & STATE AVERAGES
Fall 2018



HISTORICAL COMPOSITE ACT SCORE DISTRIBUTION PERCENTAGES
Fall Semesters



Data Sources: Student Enrollment Information; American College Testing (ACT)
Information Source: The Office of Institutional Effectiveness: web address: www.AState.edu/irp; email address: asuip@AState.edu

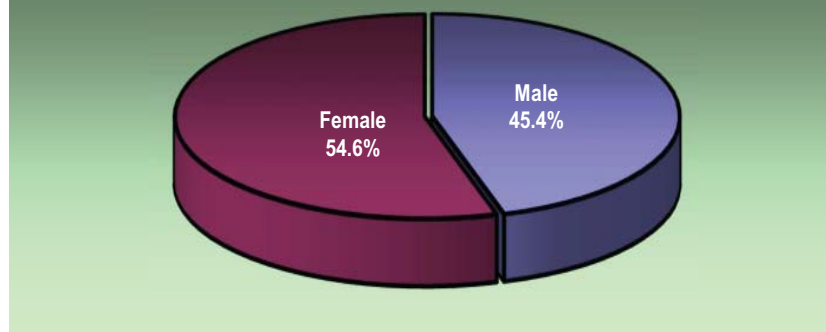
Academic Preparation - Remediation

Jonesboro Campus

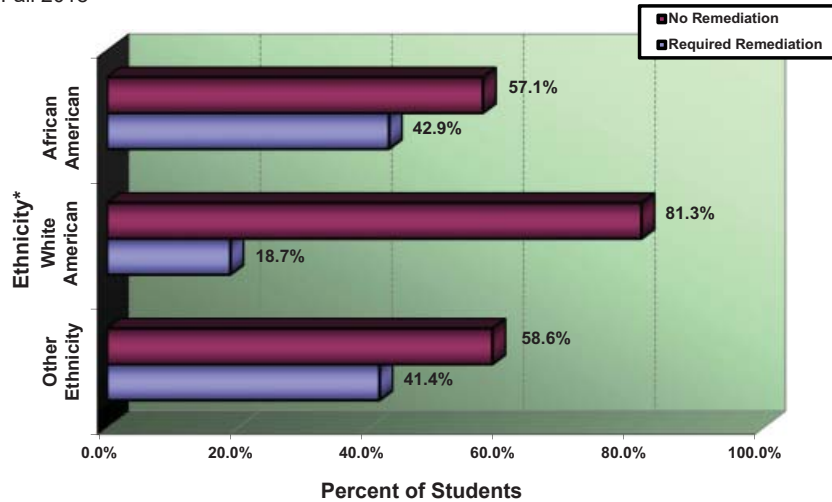
NUMBER OF FIRST-TIME FRESHMEN REQUIRING REMEDIATION BY SUBJECT - Fall Semesters

Subject	Fall Semesters				
	2014	2015	2016	2017	2018
English	134	170	204	93	117
Mathematics	271	234	283	229	296
Reading	106	143	164	69	99
Unduplicated Count	383	354	445	302	377
% Requiring Remediation	22.6%	22.4%	27.1%	21.2%	24.1%

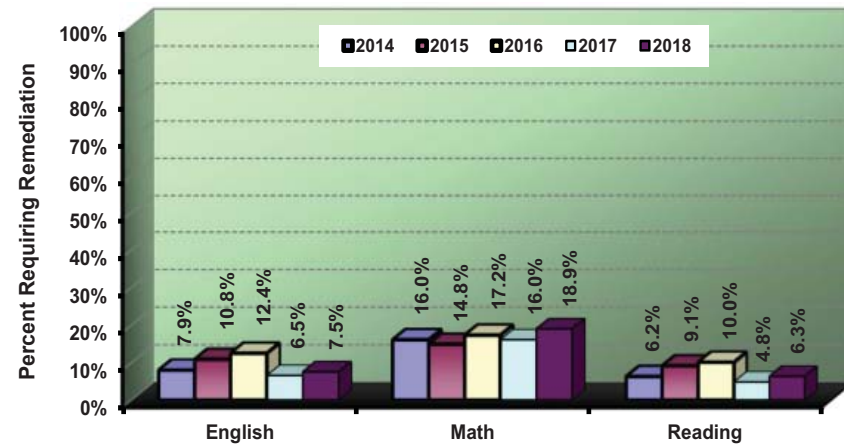
GENDER DISTRIBUTION OF FIRST-TIME FRESHMEN REQUIRING REMEDIATION - Fall 2018



FIRST-TIME FRESHMAN REMEDIATION ASSESSMENT BY ETHNICITY
Fall 2018



PERCENT OF FIRST-TIME FRESHMEN REQUIRING REMEDIATION
Fall Semesters



*NOTE: "Other" includes students reported as American Indian/Alaskan Native, Asian American, Hispanic American, Hawaiian Native/Pacific Islander, those reporting two or more races, International and those whose ethnicity is unknown.
Data Source: Student Enrollment Information
Information Source: The Office of Institutional Effectiveness; web address: www.AState.edu/irp; email address: asuipr@AState.edu

Academic Progress - Retention Rates

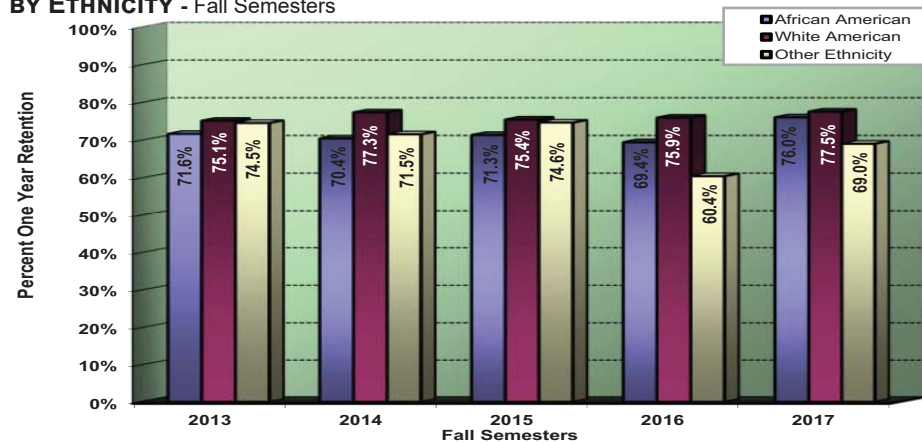
Jonesboro Campus

The most recent one-year retention rate is 76.5%.

HISTORICAL RETENTION RATES FOR FULL-TIME, FIRST-TIME FRESHMEN - Fall Semesters

Fall Semesters	Cohort Size	Adjusted Cohort	Fall to Fall Retention* After	
			1 Year	2 Years
2007	1,666	1,666	68.3%	56.3%
2008	1,752	1,752	67.9%	52.5%
2009	1,650	1,650	70.8%	54.8%
2010	1,665	1,665	71.3%	60.2%
2011	1,505	1,505	70.4%	61.4%
2012	1,633	1,633	73.1%	61.2%
2013	1,575	1,575	74.5%	63.7%
2014	1,681	1,681	76.0%	65.2%
2015	1,542	1,542	74.9%	63.0%
2016	1,609	1,609	72.8%	63.0%
2017	1,405	1,404	76.5%	

HISTORICAL RETENTION RATES FOR FULL-TIME, FIRST-TIME FRESHMEN BY ETHNICITY - Fall Semesters



Data Sources: Student Enrollment Information and The Integrated Postsecondary Education Data System (IPEDS)
 Information Source: The Office of Institutional Effectiveness: web address: www.AState.edu/irp; email address: asuirp@AState.edu

Academic Progress - Graduation Rates

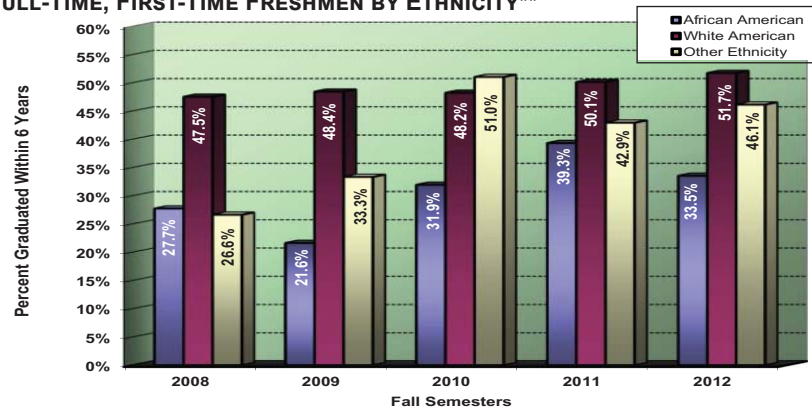
Jonesboro Campus

The most recent graduation rate within 150% of time is 48.2%.

HISTORICAL GRADUATION RATES* FOR FULL-TIME, FIRST-TIME FRESHMEN

Fall Semesters	Cohort	Adjusted Cohort	Total Completers Within 150% of Time	Graduating with Bachelor's			
				Within 150% of Time			Within 200% of Time
				4 Years	5 Years	6 Years	8 Years
2004	1,303	1,296	33.7%	16.4%	28.0%	33.4%	37.6%
2005	1,491	1,483	38.4%	19.4%	32.5%	38.0%	39.3%
2006	1,663	1,659	39.5%	20.8%	33.8%	39.1%	40.7%
2007	1,666	1,655	37.0%	18.7%	31.2%	35.7%	40.4%
2008	1,752	1,743	39.3%	20.2%	32.0%	37.2%	40.6%
2009	1,650	1,645	40.1%	21.2%	34.7%	38.8%	41.3%
2010	1,665	1,659	45.4%	26.4%	39.2%	43.9%	46.1%
2011	1,505	1,501	47.5%	29.4%	41.6%	46.0%	
2012	1,633	1,630	48.2%	31.0%	43.3%	46.8%	

HISTORICAL SIX-YEAR GRADUATION RATES FOR FULL-TIME, FIRST-TIME FRESHMEN BY ETHNICITY**



HISTORICAL SIX-YEAR GRADUATION RATES FOR FULL-TIME STUDENT ATHLETES WITH ATHLETIC AID

Fall Semesters	First-Time Freshmen		Undergraduate Transfers	
	Cohort Size	Percent Graduated	Cohort Size	Percent Graduated
2003	41	58.5%	27	59.3%
2004	49	65.3%	14	50.0%
2005	55	50.9%	27	63.0%
2006	57	52.6%	23	56.5%
2007	64	51.6%	21	71.4%
2008	64	59.4%	18	83.3%
2009	63	58.7%	23	78.3%
2010	66	71.2%	18	66.7%
2011	45	48.9%	18	77.8%
Average 2003-2011	56	57.7%	21	67.7%

*NOTE: Graduates Rates are cumulative and based on IPEDS Methodology. Graduation Rates within 150% of time represents students earning an associate degree within 3 years and students earning a bachelor's degree within 4-5-or 6 years. Graduation Rates with 200% of time includes students earning a bachelor's degree within 7-8 years. Adjusted Cohort reflects the original fall cohort after allowable exclusions: Students who died or became permanently disabled; Students who left school to serve in the armed forces; students who left school to serve with a foreign aid service of the Federal Government; and students who left school to serve on an official church mission.

**NOTE: "Other" includes students reported as American Indian/Alaskan Native, Asian American, Hispanic American, Native Hawaiian/Pacific Islander, those reporting two or more races, International and those whose ethnicity is unknown.
Data Sources: Student Enrollment Information; NCAA Division I Graduation Rate Reports
Information Source: The Office of Institutional Effectiveness: web address: www.AState.edu/irp; email address: asuirp@AState.edu

Undergraduates

Jonesboro Campus - Fall 2014 to Fall 2018

Total Undergraduates										
	Fall Semesters					Percentage of Undergraduate Total				
	2014	2015	2016	2017	2018	2014	2015	2016	2017	2018
Total Undergraduates	9,857	9,592	9,839	9,604	9,350					
All Freshmen	2,348	2,173	2,205	1,986	1,997	23.8%	22.7%	22.4%	20.7%	21.4%
Sophomore	1,796	1,778	1,702	1,722	1,619	18.2%	18.5%	17.3%	17.9%	17.3%
Junior	2,155	2,157	2,194	2,081	2,099	21.9%	22.5%	22.3%	21.7%	22.4%
Senior	2,807	2,766	2,807	2,809	2,628	28.5%	28.8%	28.5%	29.2%	28.1%
Headcount by Load										
Full-Time	7,465	7,295	7,305	6,894	6,789	75.7%	76.1%	74.2%	71.8%	72.6%
Part-Time	2,392	2,297	2,534	2,710	2,561	24.3%	23.9%	25.8%	28.2%	27.4%
Undergraduate Demographics										
	Fall Semesters					Percentage of Undergraduate Total				
	2014	2015	2016	2017	2018	2014	2015	2016	2017	2018
Headcount by Age										
Under 25	7,776	7,737	7,931	7,763	7,650	78.9%	80.7%	80.6%	80.8%	81.8%
25 & Older	2,081	1,855	1,908	1,841	1,700	21.1%	19.3%	19.4%	19.2%	18.2%
Headcount by Gender										
Male	4,208	4,112	4,185	3,881	3,739	42.7%	42.9%	42.5%	40.4%	40.0%
Female	5,649	5,480	5,654	5,723	5,611	57.3%	57.1%	57.5%	59.6%	60.0%
Headcount by Ethnicity										
African American	1,364	1,272	1,256	1,213	1,152	13.8%	13.3%	12.8%	12.6%	12.3%
American Indian/Alaskan Native	41	34	28	26	28	0.4%	0.4%	0.3%	0.3%	0.3%
Asian American	76	77	83	87	88	0.8%	0.8%	0.8%	0.9%	0.9%
Hispanic American	229	246	260	268	302	2.3%	2.6%	2.6%	2.8%	3.2%
Native Hawaiian/Pacific Islander	13	8	7	3	5	0.1%	0.1%	0.1%	<0.1%	0.1%
Two or More Races	171	189	200	206	216	1.7%	2.0%	2.0%	2.1%	2.3%
White American	7,361	7,197	7,368	7,255	7,068	74.7%	75.0%	74.9%	75.5%	75.6%
Ethnicity Unknown	84	66	73	78	67	0.9%	0.7%	0.7%	0.8%	0.7%
International	518	503	564	468	424	5.3%	5.2%	5.7%	4.9%	4.5%

Undergraduate Transfer Students

Jonesboro Campus

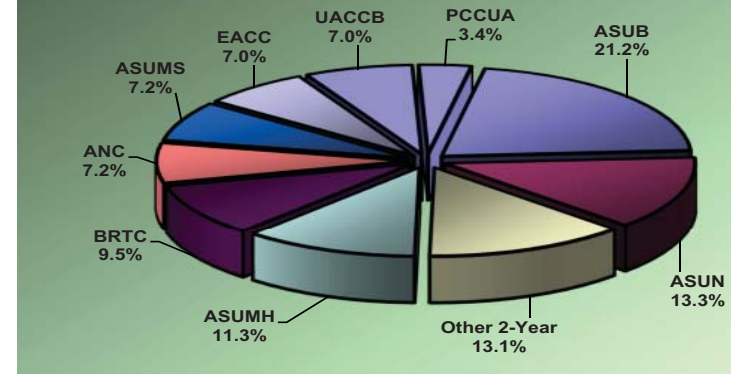
HISTORICAL ENTERING TRANSFER STUDENTS BY ORIGINATING ARKANSAS PUBLIC INSTITUTION

Students Transferring to A-State from the Following Originating Institutions	Fall Semesters				
	2014	2015	2016	2017	2018
University of Arkansas-Fayetteville	11	17	18	13	19
University of Arkansas-Little Rock	8	8	11	13	7
University of Central Arkansas	26	18	28	15	22
Other 4-Year Public Institutions	44	27	32	31	33
Arkansas State University-Beebe	111	142	103	99	94
Arkansas State University-Mountain Home	40	55	46	42	50
Arkansas State University-Newport	71	57	70	63	59
Arkansas State University Mid-South	--	27	28	40	32
Other 2-Year Public Institutions	292	250	253	242	209
Total Entering Transfers	603	601	589	558	525

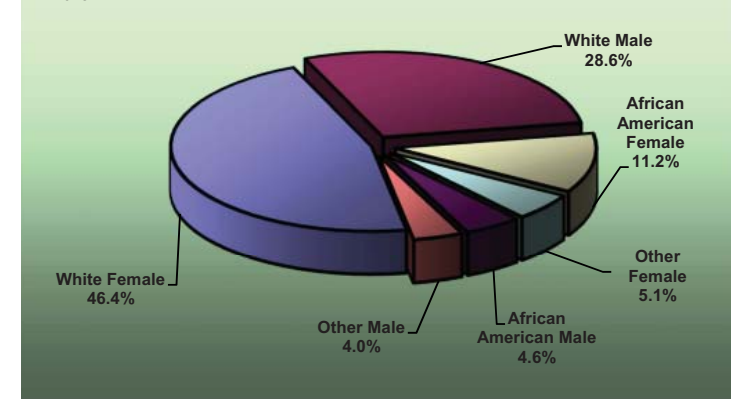
HISTORICAL ENTERING TRANSFER STUDENTS BY TOP DEGREE PROGRAMS

Students Entering A-State into the Following Top Degree Programs		Fall Semesters				
		2014	2015	2016	2017	2018
BGS	General Studies	3	48	59	53	68
BSN	Nursing	85	69	80	88	65
BS	Business Administration	27	31	38	38	55
BSE	Elementary Education	--	27	42	60	50
BS	Psychology	22	28	29	24	34
BA	Criminology	35	34	47	28	33
BS	Biological Sciences	33	25	25	27	31
BSE	Middle Level Education	40	36	25	27	22
BSRS	Radiological Sciences	19	25	19	30	25
BS	Management	30	31	26	25	19

ENTERING TRANSFER STUDENTS FROM 2-YEAR PUBLIC ARKANSAS INSTITUTIONS - Fall 2018



ENTERING TRANSFER STUDENTS BY GENDER & ETHNICITY - Fall 2018



Data Source: Student Enrollment Information
 Information Source: The Office of Institutional Effectiveness: web address: www.AState.edu/irp; email address: asuip@AState.edu

Graduates

Jonesboro Campus - Fall 2014 to Fall 2018

Total Graduates										
	Fall Semesters					Percentage of Graduate Total				
	2014	2015	2016	2017	2018	2014	2015	2016	2017	2018
Total Graduates	3,287	3,818	4,246	4,326	4,359					
Master's	2,477	2,911	3,213	3,290	3,281	75.4%	76.2%	75.7%	76.1%	75.3%
Specialist	490	546	667	699	713	14.9%	14.3%	15.7%	16.2%	16.4%
Doctoral	227	269	280	292	316	6.9%	7.0%	6.6%	6.7%	7.2%
Other Graduates	93	92	86	45	49	2.8%	2.4%	2.0%	1.0%	1.1%
Headcount by Load										
Full-Time*	661	736	756	703	667	20.1%	19.3%	17.8%	16.3%	15.3%
Part-Time	2,626	3,082	3,490	3,623	3,692	79.9%	80.7%	82.2%	83.7%	84.7%
Graduate Demographics										
	Fall Semesters					Percentage of Graduate Total				
	2014	2015	2016	2017	2018	2014	2015	2016	2017	2018
Graduate Students by Enrollment Status Category										
New Graduate Students	1,262	1,510	1,501	1,452	1,431	38.4%	39.5%	35.4%	33.6%	32.8%
A-State Graduates Returning	2,025	2,308	2,745	2,874	2,928	61.6%	60.5%	64.6%	66.4%	67.2%
Headcount by Gender										
Male	1,139	1,334	1,440	1,456	1,436	34.7%	34.9%	33.9%	33.7%	32.9%
Female	2,148	2,484	2,806	2,870	2,923	65.3%	65.1%	66.1%	66.3%	67.1%
Headcount by Ethnicity										
African American	470	516	580	618	585	14.3%	13.5%	13.7%	14.3%	13.4%
American Indian/Alaskan Native	30	20	31	28	21	0.9%	0.5%	0.7%	0.6%	0.5%
Asian American	26	34	33	31	38	0.8%	0.9%	0.8%	0.7%	0.9%
Hispanic American	64	78	90	90	112	1.9%	2.0%	2.1%	2.1%	2.6%
Native Hawaiian/Pacific Islander	3	4	3	4	0	0.1%	0.1%	0.1%	0.1%	0.0%
Two or More Races	38	53	49	63	64	1.2%	1.4%	1.2%	1.5%	1.5%
White American	2,383	2,799	3,080	3,126	3,213	72.5%	73.3%	72.5%	72.3%	73.7%
Ethnicity Unknown	45	57	93	120	120	1.4%	1.5%	2.2%	2.8%	2.8%
International	228	257	287	246	206	6.9%	6.7%	6.8%	5.7%	4.7%

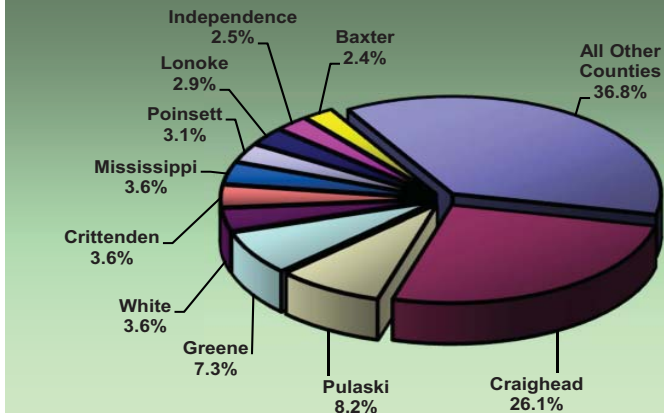
*NOTE: A "full-time" graduate student load is 9 or more semester credits.
 Data Source: Student Enrollment Information
 Information Source: The Office of Institutional Effectiveness: web address: www.AState.edu/irp; email address: asuirp@AState.edu

Alumni Statistics

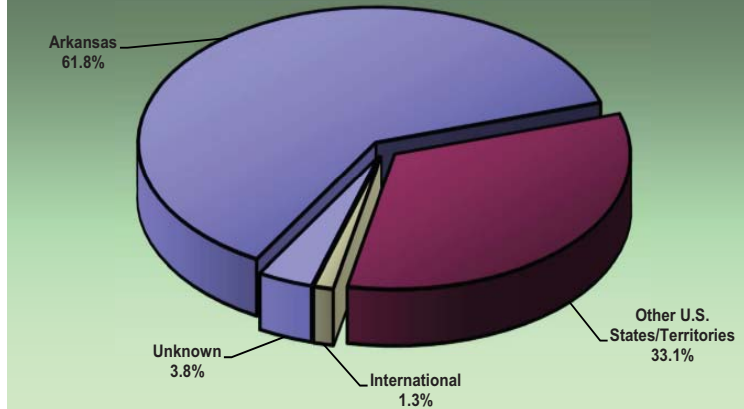
Geographic Origin of Alumni from Jonesboro Campus (as of October 2018)

Arkansas Counties		Other U.S. States/Territories	
Arkansas.....372	Lee203	Missouri5,808	New Mexico 127
Ashley90	Lincoln50	Tennessee4,548	Nevada111
Baxter1,295	Little River 44	Texas3,133	Utah104
Benton1,146	Logan65	Mississippi2,582	Oregon.....97
Boone280	Lonoke.....1,551	Florida.....1,575	Nebraska94
Bradley40	Madison.....31	California961	Idaho.....85
Calhoun20	Marion243	Georgia958	Massachusetts.....82
Carroll89	Miller.....75	Louisiana771	Minnesota82
Chicot37	Mississippi1,939	Oklahoma722	Alaska.....72
Clark92	Monroe225	Illinois.....702	Connecticut.....64
Clay866	Montgomery35	Alabama.....655	Montana.....61
Cleburne.....516	Nevada24	South Carolina.....583	Military59
Cleveland.....47	Newton33	Virginia.....546	West Virginia40
Columbia50	Ouachita74	North Carolina511	Dist. of Columbia ...39
Conway91	Perry34	Colorado409	Hawaii35
Craighead.....14,160	Phillips378	Kansas.....391	New Hampshire34
Crawford.....293	Pike32	Kentucky.....335	South Dakota33
Crittenden.....1,966	Poinsett1,659	Arizona323	Wyoming.....33
Cross1,102	Polk59	Ohio315	Maine.....27
Dallas.....15	Pope267	Michigan280	Delaware19
Desha101	Prairie243	Indiana.....266	North Dakota14
Drew117	Pulaski4,457	Washington.....240	Rhode Island14
Faulkner.....1,062	Randolph1,056	New York229	Vermont11
Franklin.....85	Saline1,188	New Jersey.....195	US Territories7
Fulton.....547	Scott29	Pennsylvania191	Total 29,030
Garland715	Searcy63	Maryland.....189	Unknown 3,306
Grant.....130	Sebastian670	Iowa138	
Greene.....3,937	Sevier61	Wisconsin130	
Hempstead68	Sharp.....713		
Hot Spring.....130	St. Francis876		
Howard43	Stone276		
Independence...1,369	Union153		
Izard.....569	Van Buren.....133		
Jackson850	Washington.....1,077		
Jefferson.....402	White1,972		
Johnson73	Woodruff.....278		
Lafayette.....14	Yell67		
Lawrence.....1,138	Total 54,250		
		International	
		Foreign Countries..... 1,182	
		All Alumni	
		Grand Total..... 87,768	

TOP ARKANSAS ALUMNI COUNTS BY COUNTY
October 2018



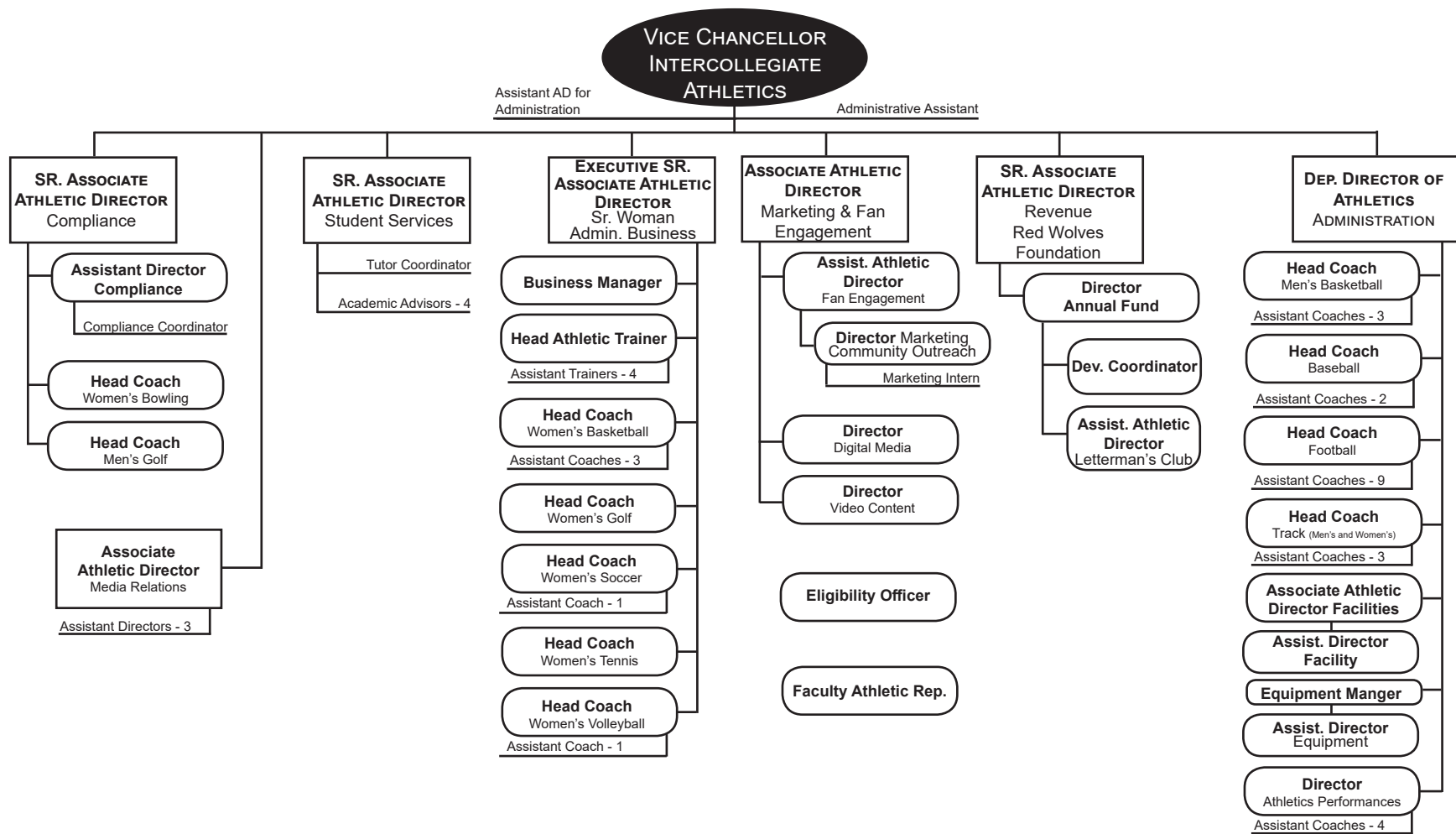
ALUMNI NATIONWIDE
October 2018



Data Source: Office of Alumni Relations, Arkansas State University
Information Source: The Office of Institutional Effectiveness: web address: www.AState.edu/irp; email address: asuir@AState.edu

Athletic Administration, A-State

2018 - 2019 Organizational Structure



Dean B. Ellis Library



Library	Fiscal Years				
	2014	2015	2016	2017	2018
Holdings					
Books (volumes)	932,056	838,243	862,790	938,252	836,742
Current Periodicals (# of subscriptions)	33,952	40,822	37,221	113,797	70,533
Government Documents (volumes)	510,722	525,525	525,995	522,110	503,354
Media (units)	28,736	112,847	154,894	148,473	240,628

Library	Fiscal Years				
	2014	2015	2016	2017	2018
Usage					
Library Usage - Circulation					
Faculty	5,985	6,127	5,855	5,491	4,676
General	21,059	22,966	25,227	22,944	24,647
Other	193	139	133	79	92
Documents	5	17	0	49	9
Periodicals	4	2	2	0	0
Reserve	644	896	997	1,443	1,604
Special Collections	447	800	161	580	751
In Library Use (materials shelved)	10,741	6,599	8,152	5,414	4,088
Online Text Views	2,252,734	2,324,769	2,477,730	1,700,254	--
Interlibrary Loan					
Borrowed	3,047	2,803	2,417	1,872	2,481
Loaned	6,886	6,105	7,984	8,062	9,958
Gate Count	386,541	358,002	365,018	336,284	316,248
Information Service to Groups					
Presentations	226	267	409	446	331
# of Persons Served	3,322	4,310	7,390	8,447	6,493

The Dean B. Ellis Library, centrally located in an eight-story building, is an educational center for the A-State community. The Library of Congress classification system is used to organize print books and media, and web-based catalogs provide access to the library's physical and online collections. Fifteen professional librarians and nineteen support staff provide a variety of library services to meet the information needs of the university, including off-campus access to web-based academic resources and acquiring materials in a wide range of formats. Reference and instruction librarians assist users in locating information and in using the library. The library also offers an active library and research skills instruction program which reaches numerous university classes. The library provides access to hundreds of online resource and data services, including more than 350,000 E-Books, via links on the library's web site. Materials that are not contained in the library's collection are accessible by interlibrary loan through the OCLC network.



Dean B. Ellis Library, Arkansas State University

Data Source: Dean B. Ellis Library, Arkansas State University
 Information Source: The Office of Institutional Effectiveness: web address: www.AState.edu/irp; email address: asuip@AState.edu

Student Costs - Tuition & Required Fees

Arkansas State University

HISTORICAL ANNUAL TUITION & REQUIRED FEES

Jonesboro Campus

Academic Year	Undergraduate				Graduate			
	Annual Tuition & Fees (Based on 15 Hour Load per Semester)		Per Credit Hour Tuition		Annual Tuition & Fees (Based on 9 Hour Load per Semester)		Per Credit Hour Tuition	
	Resident	Nonresident	Resident	Nonresident	Resident	Nonresident	Resident	Nonresident
2007-2008	\$6,010	\$13,390	\$154	\$400	\$4,370	\$9,770	\$196	\$496
2008-2009	6,370	14,290	163	427	4,640	10,436	208	530
2009-2010	6,370	14,290	163	427	4,640	10,436	208	530
2010-2011	6,640	14,860	170	444	4,820	10,850	216	551
2011-2012	6,934	12,238	177	354	5,030	9,073	225	449
2012-2013	7,180	12,610	181	362	5,198	9,338	230	460
2013-2014	7,510	13,120	187	374	5,432	9,716	238	476
2014-2015	7,720	13,480	192	384	5,576	9,968	244	488
2015-2016	8,050	14,050	200	400	5,810	10,382	254	508
2016-2017	8,200	14,260	202	404	5,918	10,544	257	514
2017-2018	8,478	14,778	210	420	6,121	10,927	267	534
2018-2019	8,607	15,297	210	433	6,210	11,016	267	534

2018-2019 ANNUAL TUITION & REQUIRED FEES

Other ASU Campuses

(Full-Time Based on 15 Hour Load per Semester)	Campuses			
	ASUB	ASUMH	ASUN	ASUMS
Resident Tuition				
Full-Time Tuition	\$3,000	\$2,880	\$2,880	\$3,360
Per Credit Hour Tuition	100	96	96	112
Nonresident Tuition				
Full-Time Tuition	5,160	4,890	4,710	4,560
Per Credit Hour Tuition	172	163	157	152
Annualized Fees	600	690	600	780

*NOTE: There is a higher per-credit-hour tuition for A-State courses in the Colleges of Business, Engineering, Nursing & Health Professions and Sciences & Mathematics. Differential tuition for non-resident, first-time and returning students prior to 2011.
Information Source: The Office of Institutional Effectiveness: web address: www.AState.edu/irp; email address: asuirp@AState.edu

Student Costs - Residence Life

Jonesboro Campus

HOUSING OCCUPANCY

Housing	Fall 2018 Capacity	Occupancy at Beginning of Fall Semester				
		2014	2015	2016	2017	2018
Residence Halls						
Arkansas Hall	362	348	286	325	228	217
Greek Village	105	103	104	104	101	100
Kays Hall	455	420	404	392	366	394
Living Learning Communities (Honors, ROTC & STEM)	423	402	414	396	354	358
Northpark Quads	836	770	800	789	732	692
University Hall	300	295	289	284	292	291
Total Residence Halls	2,481	2,338	2,297	2,290	2,073	2,052
Collegiate Park Apartments	334	298	320	308	214	291
Pack Place	342	--	--	--	334	337
Red Wolf Den Apartments	185	182	186	146	131	161
The Circle	178	--	--	--	37	32
Village Apartments	218	164	148	140	134	132
Married Student Houses	16	41	35	13	11	8
Total All Housing	3,754	3,023	2,986	2,897	2,934	3,013

2018-2019 RESIDENCE HALLS PER SEMESTER

Residence Halls	Double	Single	Deluxe
Arkansas Hall	\$2,350	\$2,650	\$2,750
Greek Village	2,400	2,580	N/A
Kays Hall	2,350	2,650	N/A
Living Learning Communities (LLC)			
LLC Honors (Bldg. 1-3)	2,375	2,580	N/A
LLC Honors (Bldg. 4)	2,400	2,605	N/A
LLC ROTC	N/A	2,350	2,375
LLC STEM	N/A	2,350	2,375
Northpark Quads (Bldg. 1-2)	N/A	2,785	N/A
Northpark Quads (Bldgs. 3-5)	N/A	2,580	N/A
University Hall	2,350	2,650	2,750

2018-2019 MEAL PLANS

	Rates
5 Day + 400	\$1,835
7 Day + 300	1,810
7 Day + 450	1,910
115 Meal Block + 700 >=Sophomore	1,585
150 Meal Block + 500 >=Sophomore	1,625
All Flex Plan >=Junior	1,450

2018-2019 APARTMENTS PER SEMESTER

Apartments	Collegiate Park	Pack Place	Red Wolf Den	The Circle	Village
1 Bed / 1 Bath	N/A	N/A	N/A	\$4,056	\$2,965
2 Bed / 2 Bath	\$2,885	\$3,554	N/A	3,554	N/A
2 Bed / 1 Bath	2,640	N/A	\$2,735	N/A	3,500
2 Bed / 1 Bath w/ washer dryer hookup	N/A	N/A	N/A	N/A	3,660
3 Bed / 1 Bath	N/A	N/A	2,615	N/A	3,980
4 Bed Townhouse	2,585	N/A	N/A	N/A	N/A
4 Bed Flat	2,545	N/A	2,650	N/A	N/A

Financial Aid

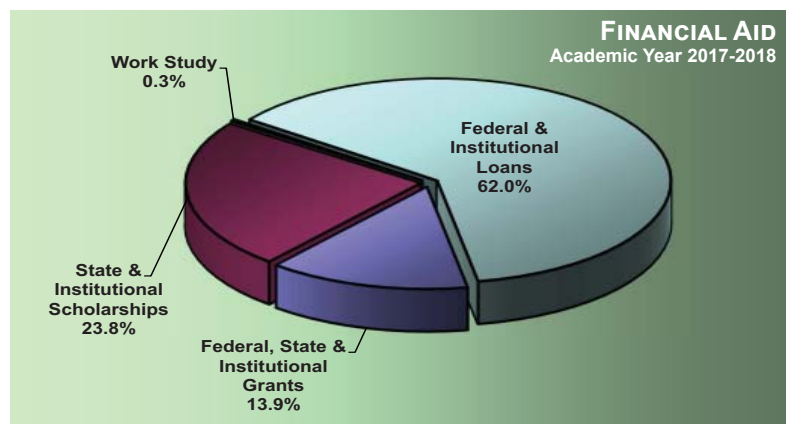
Jonesboro Campus - By Academic Year

Financial aid is available to Arkansas State University students from a variety of sources. Not only can students obtain federal aid, state aid and privately funded scholarships, but A-State also offers several types of institutional scholarship packages to qualifying Arkansas residents and non-residents. The scholarships are primarily awarded based on ACT scores, GPA's and/or academic achievement. Institutional scholarships available include the following: Arkansas Promise; A-State Scholar; Excellence Incentive Legacy, Leadership, Pride, and Spirit; Transfer; and Out-of-State Scholarships. For more information visit A-State Financial Aid & Scholarships' web site.

FINANCIAL AID AWARDED - JONESBORO CAMPUS

Academic Year 2017-2018

Aid Category	Unduplicated Number of Recipients	Amount of Awards
JONESBORO RECIPIENTS		
Federal, State, & Institutional Grants	4,972	\$21,021,910
State & Institutional Scholarships	5,252	36,058,475
Work Study	198	472,650
Federal & Institutional Loans	9,614	93,886,373
Total Aid Awarded	12,693	\$151,439,411



Federal Aid Programs

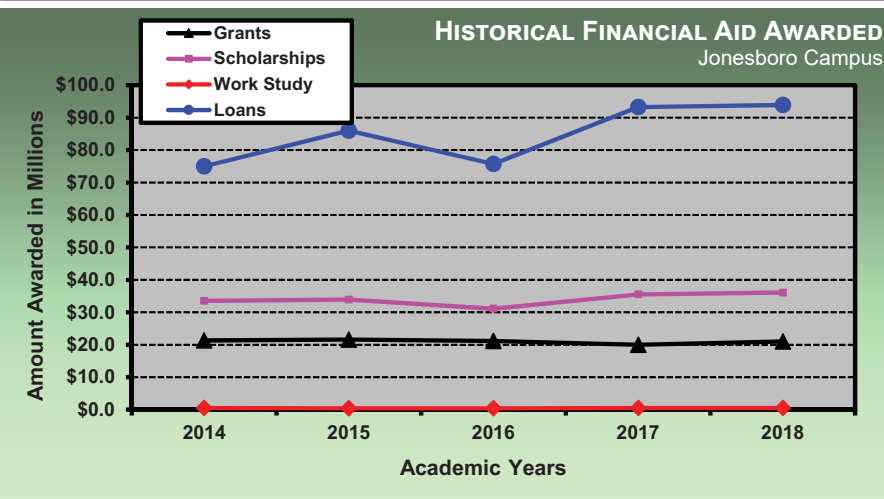
Work-Study Program	Stafford Student Loan
Parent Loan (Undergraduate Students)	(Subsidized & Unsubsidized)
Pell Grants	Supplemental Educational Opportunity Grants
Perkins Student Loan	

State Programs

Arkansas Academic Challenge Scholarship	Minority Teachers Scholarship
GO! Opportunities Grant	Nurse Educator Loan
Governor's Distinguished Scholarship	Second Effort Scholarship
Law Enforcement Dependent's Scholarship	State Grants
MIA/KIA Dependents Scholarship	State Teacher Education Program
Military Dependents Scholarship	Teacher Opportunity Program
Minority Masters Fellows Program	Workforce Improvement Grant

University Aid Programs

Arkansas Promise	A-State Scholar
A-State Excellence	A-State Spirit
A-State Leadership	A-State Pride
Out-of-State Scholarship	

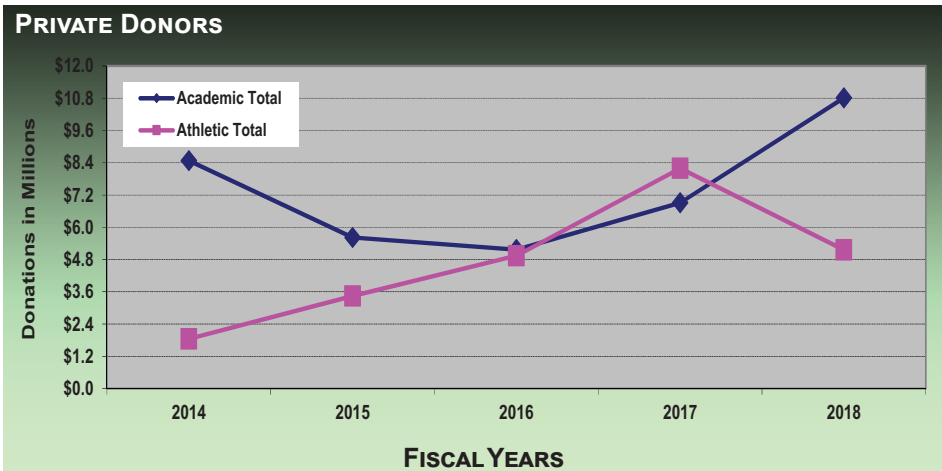
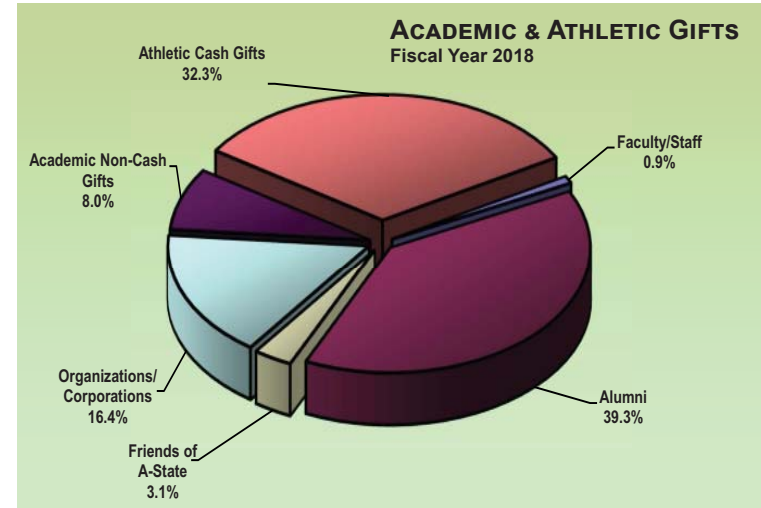


*NOTE: Data represents only the financial aid processed through A-State.
 Data Source: Financial Assistance to Students in Institutions of Higher Education
 Information Source: The Office of Institutional Effectiveness: web address: www.AState.edu/irp; email address: asuipr@AState.edu

Arkansas State University Donors

Jonesboro Campus

Source of Donation	Fiscal Years				
	2014	2015	2016	2017	2018
Academic Gifts					
Faculty/Staff	\$183,638	\$188,717	\$190,409	\$213,829	\$147,230
Alumni	2,188,469	2,975,723	1,219,065	4,855,784	6,277,200
Friends of A-State	456,006	494,524	1,052,784	426,634	500,125
Organizations/Corp.	5,511,239	1,895,337	2,247,464	1,355,367	2,612,854
Non-Cash Gifts	139,783	70,428	459,192	56,083	1,277,356
Academic Total	\$8,479,134	\$5,624,730	\$5,168,914	\$6,907,695	\$10,814,765
Athletic Gifts					
Cash Gifts	\$1,785,353	\$3,435,844	\$4,912,756	\$8,191,058	\$5,162,214
Non-Cash Gifts	63,426	9,349	26,081	0	0
Athletic Total	\$1,848,779	\$3,445,193	\$4,938,838	\$8,191,058	\$5,162,214
Grand Total	\$10,327,912	\$9,069,923	\$10,107,752	\$15,098,753	\$15,976,979



Private donor support enables Arkansas State University to attract and retain the highest quality students. Citizens of Northeast Arkansas communities have historically provided generous donor support. Additionally, private support endows numerous A-State scholarships each year. Scholarships help to keep the brightest students in Arkansas, and scholarships are more necessary now than ever. An endowed scholarship can be established for \$25,000, or an annual gift may be provided to fund one or more scholarships. Scholarships are currently available in virtually every discipline.

Data Source: Office of Development, Arkansas State University
 Information Source: The Office of Institutional Effectiveness: web address: www.AState.edu/irp; email address: asuipr@AState.edu



Employees

This page has not been updated. Updates will be made once the IPEDS reporting has been completed in April.



System Employee Summary

Jonesboro, Beebe, Mtn. Home, Newport & Mid-South - Fall 2018

Full-Time Employees by Category

	System	Campuses					Total
		A-State	ASUB	ASUMH	ASUN	ASUMS	
Postsecondary Teachers	0	525	109	44	70	44	792
Archivists, Curators & Museum Technicians	0	8	0	0	0	0	8
Librarians & Library Technicians	0	23	6	4	2	1	36
Student, Academic & Other Educational Services Occupations	0	33	16	9	6	0	64
Management Occupations	8	221	39	17	26	21	332
Business & Financial Occupations	7	269	15	1	5	8	305
Computer, Engineering & Science Occupations	0	67	11	5	5	6	94
Comm. & Social Serv., Legal, Arts, Design, Sports & Media Occupations	4	74	17	1	5	35	136
Healthcare Practitioners & Technical Occupations	0	11	0	0	0	0	11
Service Occupations, Sales & Related	0	103	10	6	13	8	140
Office & Administrative Support Occupations	1	146	39	20	27	21	254
Natural Resources, Construction & Maintenance Occupations	0	94	14	4	2	0	114
Production, Transportation & Material Moving Occupations	0	5	1	0	1	0	7
Total Employees	20	1,579	277	111	162	144	2,293
By Gender							
Male	6	637	119	45	60	59	926
Female	14	942	158	66	102	85	1,367
By Ethnicity							
African American	2	183	11	0	11	48	255
American Indian/Alaskan Native	0	11	3	0	0	0	14
Asian American	1	42	1	0	1	2	47
Hispanic American	0	35	3	4	0	0	42
Native Hawaiian/Pacific Islander	0	1	2	0	0	0	3
Two or More Races	0	20	2	0	0	1	23
White American	17	1,223	255	107	149	93	1,844
Other Ethnicity**	0	64	0	0	1	0	65
Total Known Minorities***	3	292	22	4	12	51	384

**Other Ethnicity includes internationals and unknown.

***Minorities include African American, American Indian/Alaskan Native, Asian American, Hispanic American, Native Hawaiian/Pacific Islander, and those reporting two or more races.

Data Source: Faculty/Staff Information

Information Source: The Office of Institutional Effectiveness: web address: www.AState.edu/irp; email address: asuipr@AState.edu

Full-Time Instructional Faculty

Jonesboro Campus - Fall 2014 to Fall 2018

Total Full-Time Instructional Faculty										
	Fall Semesters					Percentage of Faculty Total				
	2014	2015	2016	2017	2018	2014	2015	2016	2017	2018
Total Full-Time Faculty	502	502	498	527	525					
9/10 Month Faculty	439	440	433	454	441	87.5%	87.6%	86.9%	86.1%	84.0%
11/12 Month Faculty	63	62	65	73	84	12.5%	12.4%	13.1%	13.9%	16.0%
Faculty by Gender										
Male	237	234	233	246	241	47.2%	46.6%	46.8%	46.7%	45.9%
Female	265	268	265	281	284	52.8%	53.4%	53.2%	53.3%	54.1%
Faculty by Ethnicity										
African American	32	33	33	32	35	6.4%	6.6%	6.6%	6.1%	6.7%
American Indian/Alaskan Native	2	2	3	3	3	0.4%	0.4%	0.6%	0.6%	0.6%
Asian American	27	32	32	33	35	5.4%	6.4%	6.4%	6.3%	6.7%
Hispanic American	8	8	10	11	13	1.6%	1.6%	2.0%	2.1%	2.5%
Native Hawaiian/Pacific Islander	0	1	1	1	1	0.0%	0.2%	0.2%	0.2%	0.2%
Two or More Races	18	16	4	2	7	3.6%	3.2%	0.8%	0.4%	1.3%
White American	392	395	396	421	392	78.1%	78.7%	79.5%	79.9%	74.7%
Ethnicity Unknown	4	3	4	16	25	0.8%	0.6%	0.8%	3.0%	4.8%
International	19	12	15	8	14	3.8%	2.4%	3.0%	1.5%	2.7%
Total Known Minorities*	87	92	83	82	94	17.3%	18.3%	16.7%	15.6%	17.9%
Faculty by Age										
Under 33	49	41	44	51	50	9.8%	8.2%	8.8%	9.7%	9.5%
33 to 40	89	98	101	98	104	17.7%	19.5%	20.3%	18.6%	19.8%
41 to 48	98	100	93	98	107	19.5%	19.9%	18.7%	18.6%	20.4%
49 to 56	110	100	101	109	109	21.9%	19.9%	20.3%	20.7%	20.8%
57 & Older	156	163	159	171	155	31.1%	32.5%	31.9%	32.4%	29.5%

*NOTE: Minorities include African American, American Indian/Alaskan Native, Asian American, Hispanic American, Native Hawaiian/Pacific Islander and those reporting two or more races.
Data Source: Faculty/Staff Information
Information Source: The Office of Institutional Effectiveness: web address: www.AState.edu/irp; email address: asuip@AState.edu

Full-Time Instructional Faculty Statistics

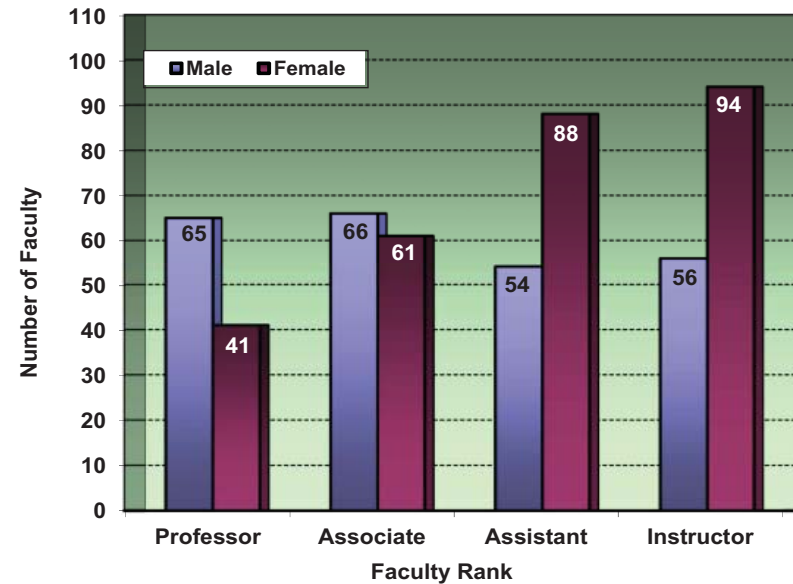
Jonesboro Campus

HISTORICAL FULL-TIME INSTRUCTIONAL FACULTY BY RANK

Faculty Rank	Fall Semesters				
	2014	2015	2016	2017	2018
Professor	100	105	107	114	106
Associate	124	121	112	121	127
Assistant	160	162	163	159	142
Instructor	118	114	116	133	150
All Ranks	502	502	498	527	525

FULL-TIME INSTRUCTIONAL FACULTY BY RANK & GENDER

Fall 2018

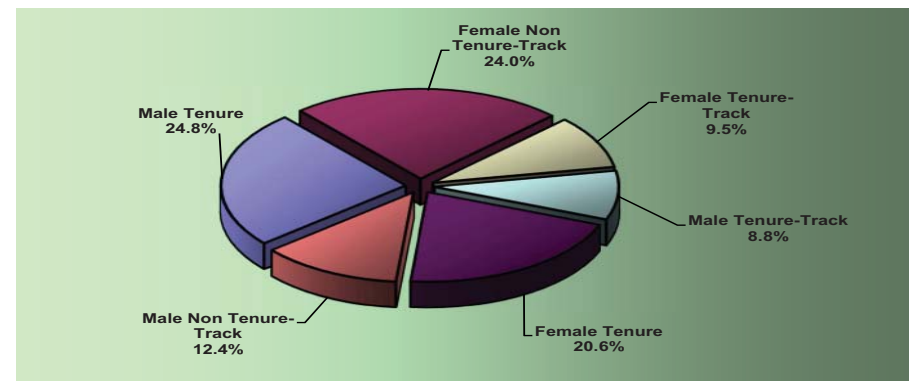


HISTORICAL SEMESTER CREDIT HOUR (SCH) PRODUCTION BY RANK

Faculty Rank	Fall Semesters				
	2014	2015	2016	2017	2018
Number & Percentage of SCH Production					
Professor	23,254	24,516	23,435	25,620	24,114
	16.3%	17.2%	16.0%	18.2%	17.3%
Associate	26,967	25,883	28,003	26,877	27,325
	18.9%	18.1%	19.2%	19.0%	19.6%
Assistant	30,859	32,613	34,309	31,110	33,228
	21.6%	22.8%	23.5%	22.0%	23.9%
Instructor	34,605	33,804	32,376	34,835	35,887
	24.2%	23.7%	22.2%	24.7%	25.8%
Supplemental Faculty*	27,119	25,968	27,942	22,663	18,696
	19.0%	18.2%	19.1%	16.1%	13.4%
Total SCH Production	142,804	142,784	146,065	141,105	139,250

TENURE STATUS OF FULL-TIME INSTRUCTIONAL FACULTY BY GENDER

Fall 2018



*NOTE: Supplemental faculty include adjuncts, graduate teaching assistants, administrative staff and high school teachers.
 Data Sources: Salaries, Tenure and Fringe Benefits of Full-Time Instructional Faculty Surveys
 Information Source: The Office of Institutional Effectiveness: web address: www.AState.edu/irp; email address: asuirp@AState.edu

Full-Time Instructional Faculty Salaries

Jonesboro Campus

HISTORICAL A-STATE MEAN FACULTY SALARIES*

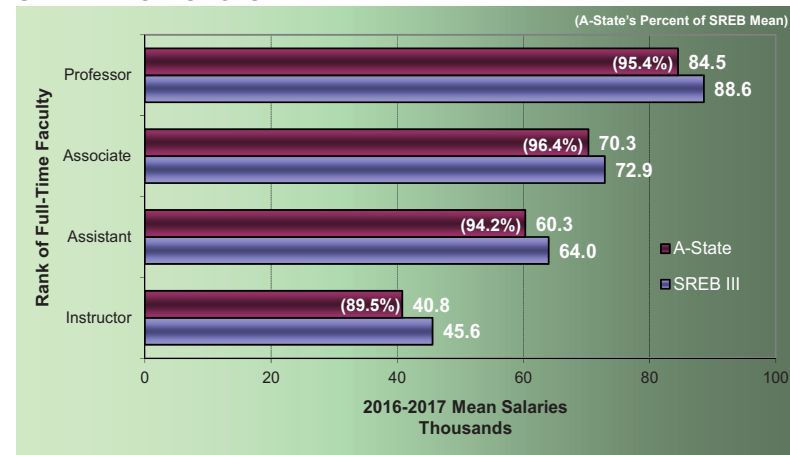
Fall Semesters	Rank of Full-Time Faculty			
	Professor	Associate	Assistant	Instructor
2009	\$75,475	\$60,146	\$53,809	\$36,538
2010	73,652	60,171	54,918	34,966
2011	78,155	62,546	56,764	36,468
2012	81,892	65,936	56,657	38,045
2013	83,710	68,534	57,827	40,638
2014	83,817	69,449	59,230	40,880
2015	83,494	69,967	58,639	39,578
2016	84,526	70,253	60,306	40,754
2017	86,543	72,066	58,804	43,374
2018	86,335	69,444	58,977	42,216
Percent Change 2009-2018	14.4%	15.5%	9.6%	15.5%

2017-2018 MEAN FACULTY SALARIES* FOR ARKANSAS PUBLIC 4-YEAR INSTITUTIONS AS REPORTED TO IPEDS

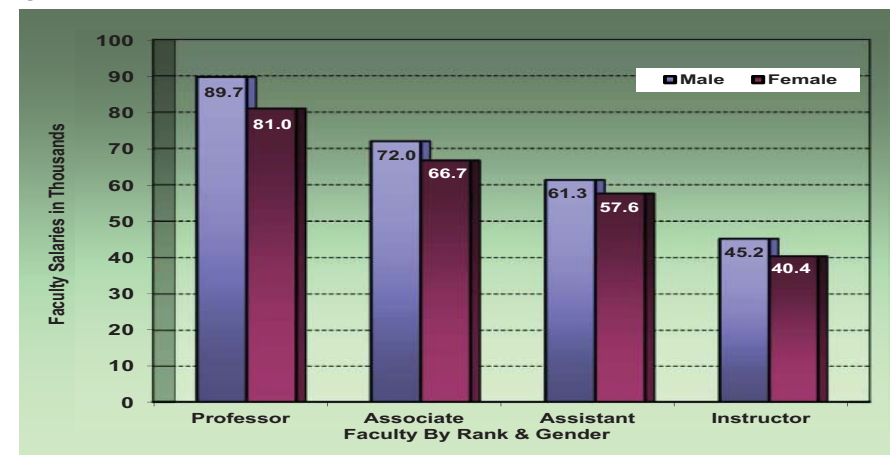
Institution	SREB & AAUP		Rank of Full-Time Faculty			
	Classifications		Professor	Associate	Assistant	Instructor
UAF	I	I	\$124.8	\$91.8	\$81.0	\$54.4
SAUM	IV	IIA	88.7	68.5	58.6	46.1
ASU	III	IIA	86.5	72.1	58.8	43.4
UALR	II	IIA	86.2	70.1	63.4	44.4
UCA	III	IIA	80.9	67.7	62.3	50.3
ATU	III	IIB	80.2	65.6	56.7	43.6
UAM	V	IIB	65.5	56.2	49.2	42.9
UAPB	VI	IIB	64.2	60.6	53.5	44.1
HSU	IV	IIA	63.2	54.8	51.4	41.5

(Salaries in Thousands)

2016-2017 MEAN FACULTY SALARIES* COMPARING A-STATE TO SREB III INSTITUTIONS**



2018-2019 A-STATE FACULTY SALARIES COMPARING GENDER BY RANK



*NOTE: Salaries reported as 11-12 month appointments have been converted to 9-10 month equivalents.

**NOTE: SREB III consists of institutions in Alabama, Arkansas, Florida, Georgia, Kentucky, Louisiana, Maryland, Mississippi, North Carolina, Oklahoma, South Carolina, Tennessee, Texas, Virginia and West Virginia.

Data Sources: Salaries, Tenure and Fringe Benefits of Full-Time Instructional Faculty Surveys; SREB

Information Source: The Office of Institutional Effectiveness: web address: www.AState.edu/irp; email address: asuipr@AState.edu

Full-Time Staff Statistics

Jonesboro Campus

Jonesboro Campus Full-Time Staff										
	Fall Semesters					Percentage of Total by Category				
	2014	2015	2016	2017	2018	2014	2015	2016	2017	2018
Archivists, Curators & Museum Technicians	6	8	8	9	8	0.6%	0.7%	0.8%	0.8%	0.8%
Librarians & Library Technicians	27	27	25	24	23	2.5%	2.5%	2.4%	2.2%	2.2%
Student & Other Educ. Serv.	33	36	45	34	33	3.1%	3.3%	4.3%	3.1%	3.1%
Management	190	197	210	215	221	17.9%	18.2%	20.2%	19.9%	21.0%
Business & Financial	252	272	256	266	269	23.8%	25.1%	24.6%	24.6%	25.5%
Computer, Eng. & Science	77	74	65	70	67	7.3%	6.8%	6.2%	6.5%	6.4%
Comm., Soc., Legal, Arts, Sports & Media	73	71	65	69	74	6.9%	6.6%	6.2%	6.4%	7.0%
Healthcare Practitioners & Technical	8	9	10	10	11	0.8%	0.8%	1.0%	0.9%	1.0%
Service Occupations & Sales Related	105	111	99	112	103	9.9%	10.3%	9.5%	10.4%	9.8%
Office & Administrative Support	169	160	151	161	146	16.0%	14.8%	14.5%	14.9%	13.9%
Natural Resources, Const. & Maint.	115	112	102	106	94	10.9%	10.4%	9.8%	9.8%	8.9%
Prod., Transportation & Material Moving	4	5	5	5	5	0.4%	0.5%	0.5%	0.5%	0.5%
Total Employees	1,059	1,082	1,041	1,081	1,054					
By Gender										
Male	412	408	401	417	396	38.9%	37.7%	38.5%	38.6%	37.6%
Female	647	674	640	664	658	61.1%	62.3%	61.5%	61.4%	62.4%
By Ethnicity										
African American	127	130	129	146	148	12.0%	12.0%	12.4%	13.5%	14.0%
American Indian/Alaskan Native	4	2	5	4	8	0.4%	0.2%	0.5%	0.4%	0.8%
Asian American	6	9	11	9	7	0.6%	0.8%	1.1%	0.8%	0.7%
Hispanic American	11	14	14	22	22	1.0%	1.3%	1.3%	2.0%	2.1%
Native Hawaiian/Pacific Islander	3	2	0	0	0	0.3%	0.2%	0.0%	0.0%	0.0%
Two or More Races	17	21	14	4	13	1.6%	1.9%	1.3%	0.4%	1.2%
White American	885	899	857	891	831	83.6%	83.1%	82.3%	82.4%	78.8%
Other Ethnicity*	6	5	11	5	25	0.6%	0.5%	1.1%	0.5%	2.4%
Total Known Minorities**	168	178	173	185	198	15.9%	16.5%	16.6%	17.1%	18.8%

*Other Ethnicity includes nonresident aliens and unknown.

**Minorities include African American, American Indian/Alaskan Native, Asian American, Hispanic American, Native Hawaiian/Pacific Islander and those reporting two or more races.

Data Sources: Faculty/Staff Information

Information Source: The Office of Institutional Effectiveness: web address: www.AState.edu/irp; email address: asuipr@AState.edu



501 Woodlane, Suite 301, Little Rock, AR 72201